

**legnopan<sup>®</sup>**



<b>SPECIAL THREE-LAYER FINISHES</b>	<b>5</b>
Three-layer OAK Panes	9 - 16
Three-layer Walnut Panels	17 - 19
Prima Patina Panels	20 - 22
Cube Line	27 - 30
<b>ARDESIALite™</b>	<b>31 - 32</b>
ARDESIALite™ SOFT	33 - 35
ARDESIALite™ PANNELLO PLACCATO <b>new</b>	36
<b>ACRYLIC</b>	<b>39</b>
Voice Tec MATT-HIGH GLOSS	40 - 44
Voice Tec GLASS-TEC	45
Voice Tec TECOCTURE	46 - 49
<b>LP SURFACE</b>	<b>50 - 51</b>
<b>SOLID SURFACE</b>	<b>52</b>
Starkryl®	53 - 57
<b>INTERIOR FLOORS</b>	<b>58</b>
Wood Flooring <b>new</b>	59 - 61
Collection 190 <b>new</b>	62
F4U: Floor For You <b>new</b>	63 - 67
<b>OUTDOOR FLOORS</b>	<b>68</b>
Moon-Wood <b>new</b>	69 - 71

**Legnopan®** Spa produces and trades wood semi-finished products and wood derivatives. It is a modern and flexible company always monitoring the evolving market. Research, proposal-making skills and punctuality in the deliveries are the elements of a constant company growth that started in the postwar period, and that has continued in the next three generations up to now. Legnopan® has been operating in the sector for many years; it has developed its knowledge and implemented studies in the huge wood and wood derivatives sector, so as to identify those products that, both for innovation and technology, and for taste and sophistication, can represent the best choice for every need.

Legnopan® is the ideal partner to find solutions for design and internal architecture studios, for the furniture craftsmanship and industry, and for furniture in general.

Wid division, that is an operative unit dedicated to architects and designers, presents sophisticated products thought for the design.

Nowadays the company can count on a commercial development all over Italy thanks to a structured and strengthened logistics based on branches and showrooms. We intend to guarantee a frugal use of energy and raw materials, respecting the environment where we live. For this reason Legnopan® has been in possession of an ISO 9001 certification for more than 10 years, furthermore, it has had an FSC® and PEFC™ certification since 2011. Before placing a new product in the catalogue Legnopan® evaluates its characteristics and benefits, addressing to suppliers who are responsible and respectful of the environment. Many of our current partners do respect the main certifications systems that are the starting point to select new products and suppliers.

# SAMPLE LIST

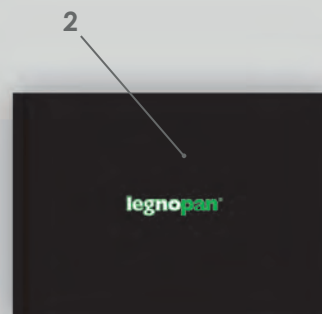
- |   |                                |      |
|---|--------------------------------|------|
| 1 | Three layers panels sample box | € 30 |
| 2 | Legnopan catalogue             | € 10 |
| 3 | Cube Box                       | € 30 |
| 4 | LP Surface box                 | € 20 |
| 5 | Box 1st Patina                 | € 30 |
| 6 | Kit ARDESIALite™               | € 15 |

For samples request\*  
and further information

T. +39 0445 551500

Fax +39 0445 551515

[campioni@legnopan.com](mailto:campioni@legnopan.com)



\*All the prices are net prices excluding VAT and packaging and shipping costs.





# SPECIAL THREE-LAYER FINISHES





courtesy of L'AMBIENTE



courtesy of L'AMBIENTE





# Wood is a “living” material, authentic and timeless,

it can assume innumerable shapes thanks to design and to continual transformations maintaining the characteristics and feel that have always distinguished it since time immemorial.

Trends see it as the unchallenged protagonist in the collections of the most important furnishing companies that enhance its grain and distinctive nature, both as a furnishing accessory and as a covering.

Legnopan proposes a product range that needs no introduction and enriches the contexts providing an unmistakable sense of comfort.









# THREE-LAYER OAK PANELS

## NATURAL OAK A/B

Natural oak, with its shades varying from yellow-brown to golden yellow, greatly enhances the quality of living spaces, thanks to the intensity of its grain.

### STRUCTURE 1

2 OUTER LAMINATED LAYERS IN NATURAL OAK  
INNER CORE IN JOINED MONOLAYER OAK

### STRUCTURE 2

2 OUTER LAMINATED LAYERS IN NATURAL OAK  
INNER CORE IN MULTILAYERED BIRCH

### ONLY LAYERS A/B

TYPE OF WOOD	OAK, ENGLISH OAK, "QUERCUS ROBUR"
CERTIFICATION	FSC
APPEARANCE CLASS	UNI-EN 13017-2
PANEL FORMAT	length from 1500 mm to 3020 mm width from 1200 mm to 1270 mm
PANEL THICKNESS	20 mm and 27 mm <b>(Off-the-shelf)</b> 12 mm; 16 mm; 32 mm and 40 mm <b>(on request)</b>
LAYER WIDTH	from 100 mm to 200 mm
SURFACE	120 grit
WOOD MOISTURE	10% +/- 2
APPLICATION	furniture for interiors covering for interiors

Product made from natural, hand-crafted raw materials; therefore, panels may not be perfectly equal and/or identical to the sample viewed.









## RUSTIC NATURAL OAK C/C

Rustic Natural Oak expresses the materic characteristics of oak through the “defects” peculiar to its nature. The end result is a captivating atmosphere reminiscent of the past.

### STRUCTURE 1

2 OUTER LAYERS IN RUSTIC NATURAL OAK  
INNER CORE IN JOINED MONOLAYER OAK

### STRUCTURE 2

2 OUTER LAYERS IN RUSTIC NATURAL OAK  
INNER CORE IN MULTILAYERED BIRCH

### ONLY LAYERS C/C

TYPE OF WOOD	OAK, ENGLISH OAK, “QUERCUS ROBUR”
CERTIFICATION	FSC
APPEARANCE CLASS	UNI-EN 13017-2
PANEL FORMAT	length from 1500 mm to 3020 mm width from 1200 mm to 1270 mm
PANEL THICKNESS	20 mm and 27 mm <b>(Off-the-shelf)</b> 12 mm; 16 mm; 32 mm and 40 mm <b>(on request)</b>
LAYER WIDTH	from 100 mm to 200 mm
SURFACE	120 grit
WOOD MOISTURE	10% +/- 2
APPLICATION	furniture for interiors covering for interiors

Product made from natural, hand-crafted raw materials; therefore, panels may not be perfectly equal and/or identical to the sample viewed.









## RUSTIC STEAMED OAK C/CC

Living and graven with knots and flashes, Rustic Steamed Oak is a wood to be touched, capable of transmitting naturalness and refinement, infusing a congenial sense of comfort.

### STRUCTURE 1

2 OUTER LAYERS IN RUSTIC STEAMED OAK  
INNER CORE IN JOINED MONOLAYER OAK

### STRUCTURE 2

2 OUTER LAYERS IN RUSTIC STEAMED OAK  
INNER CORE IN MULTILAYERED BIRCH

### ONLY LAYERS C/CC

TYPE OF WOOD	OAK , FARNIA, "QUERCUS ROBUR"
CERTIFICATION	FSC
APPEARANCE CLASS	UNI-EN 13017-2
PANEL FORMAT	length from 1500 mm to 3020 mm width from 1200 mm to 1270 mm
PANEL THICKNESS	20 mm and 27 mm <b>(Off-the-shelf)</b> 12 mm; 16 mm; 32 mm and 40 mm <b>(on request)</b>
LAYER WIDTH	from 100 mm to 200 mm
SURFACE	120 grit
WOOD MOISTURE	10% +/- 2
APPLICATION	furniture for interiors covering for interiors

Product made from natural, hand-crafted raw materials; therefore, panels may not be perfectly equal and/or identical to the sample viewed.









## RUSTIC ANTIQUE-STYLE OAK C/CC

Living and graven with knots and flashes, RUSTIC ANTIQUE-STYLE OAK is a wood to be touched, capable of transmitting naturalness and refinement, infusing a congenial sense of comfort.

### STRUCTURE 1

2 OUTER LAYERS IN RUSTIC ANTIQUE-STYLE STEAMED OAK  
OAK INNER CORE

### STRUCTURE 2

2 OUTER LAYERS IN RUSTIC ANTIQUE-STYLE STEAMED OAK  
INNER CORE IN MULTILAYERED BIRCH

### ONLY LAYERS C/CC

TYPE OF WOOD	OAK, ENGLISH OAK, "QUERCUS ROBUR"
CERTIFICATION	FSC
APPEARANCE CLASS	UNI-EN 13017-2
PANEL FORMAT	length from 1500 mm to 3020 mm width from 1200 mm to 1270 mm
PANEL THICKNESS	20 mm (Off-the-shelf) 12 mm; 16 mm; 32 mm and 40 mm (on request)
LAYER WIDTH	from 100 mm to 200 mm
SURFACE	120 grit
WOOD MOISTURE	10% +/- 2
APPLICATION	furniture for interiors covering for interiors

Product made from natural, hand-crafted raw materials; therefore, panels may not be perfectly equal and/or identical to the sample viewed.







# THREE-LAYER WALNUT PANELS

## EUROPEAN WALNUT WOOD A/B

A grey-brown nuance with blackish striations is the characterising feature of European Walnut providing a touch of refinement. Because of the ease with which it is machined and because of its structural beauty, this is a greatly sought after wood and much used for furnishings.

### STRUCTURE 1

2 OUTER LAYERS IN EUROPEAN WALNUT

INNER CORE IN JOINED MONOLAYER WALNUT

### STRUCTURE 2

2 OUTER LAYERS IN EUROPEAN WALNUT

INNER CORE IN MULTILAYERED BIRCH

### ONLY LAYERS A/B

TYPE OF WOOD	WALNUT, "JUGLANS REGIA"
APPEARANCE CLASS	UNI-EN 13017-2
PANEL FORMAT	length from 1050 mm to 2800 mm width from 1200 mm to 1270 mm
PANEL THICKNESS	22 mm e 27 mm ( <b>Off-the-shelf</b> ) 12 mm; 16 mm; 32 mm and 40 mm ( <b>on request</b> )
LAYER WIDTH	from 90 mm to 200 mm
SURFACE	120 grit
WOOD MOISTURE	10% +/- 2
APPLICATION	furniture for interiors covering for interiors

Product made from natural, hand-crafted raw materials; therefore, panels may not be perfectly equal and/or identical to the sample viewed.







## CANALETTO WALNUT A/B

Canaletto Walnut's harmonious and uniform dark purple colouring instils serenity. A warm glow and velvety surface provide this wood with natural elegance, acknowledged throughout the world.

### STRUCTURE 1

2 OUTER LAYERS IN CANALETTO WALNUT

INNER CORE IN JOINED MONOLAYER WALNUT

### STRUCTURE 2

2 OUTER LAYERS IN CANALETTO WALNUT

INNER CORE IN MULTILAYERED BIRCH

### ONLY LAYERS A/B

TYPE OF WOOD	WALNUT, BLACK WALNUT, "JUGLANS NIGRA"
APPEARANCE CLASS	UNI-EN 13017-2
PANEL FORMAT	length from 1050 mm a 3000 mm width from 1200 mm a 1270 mm
PANEL THICKNESS	22 mm and 27 mm <b>(Off-the-shelf)</b> 12 mm; 16 mm; 32 mm and 40 mm <b>(on request)</b>
LAYER WIDTH	from 90 mm to 200 mm
SURFACE	120 grit
WOOD MOISTURE	10% +/- 2
APPLICATION	furniture for interiors covering for interiors

Product made from natural, hand-crafted raw materials; therefore, panels may not be perfectly equal and/or identical to the sample viewed.



# PRIMA PATINA PANELS

Three-layer panel with first patina finish. The visible side is made up of old wood slats (with the exception of Bio\*), appropriately cleaned, treated and selected in order to compose panels with an antique effect that are particularly suitable in combinations with technical materials and/or solid colours. Ideal for the production of furniture, vertical/horizontal cladding and doors.

\*antiqued virgin wood

**Check with the sales office for available sizes.**

## PRIMA PATINA ONE SIDE ATTIC

### MEASURES

Thickness	21 mm
Length	from 1800 to 3500 mm for 1220 mm



## PRIMA PATINA ONE SIDE BURNED BY THE SUN GREY

### MEASURES

Thickness	21 mm
Length	from 1800 to 3500 mm for 1220 mm



## PRIMA PATINA ONE SIDE BURNED BY THE SUN BROWN

### MEASURES

Thickness	21 mm
Length	from 1800 to 3500 mm for 1220 mm





## PRIMA PATINA BIO INTERIOR **new**

This panel is made of mixed pine and fir wood. Suitable for INDOOR use as a NON-STRUCTURAL component, in a dry environment. One side evaporated with an elegant vintage effect.

PANEL FORMAT	lunghezza da 1000 mm a 3000 mm larghezza 1240 mm
PANEL THICKNESS	20 mm
WOOD MOISTURE	10% +/- 2
APPLICATION	indoor furniture indoor cladding

Material made using natural raw materials and handcrafted, the panels may not be exactly the same as each other and/or identical to the sample viewed at the time of purchase.



## PRIMA PATINA INTERIOR

The three layers first patina "interior" panels are made using brushed wood recovered from furniture and wall claddings used inside barns and houses.

The 1<sup>st</sup> layer is made of a 6mm reclaimed wood while the inner layer (8 mm) and the back layer (7 mm) are made of spruce.

The panels are squared and the fist patina surface can be tessellated to fill the holes and cracks.

PANEL FORMAT	length from 1700 mm to 3000 mm width 1220 mm
PANEL THICKNESS	20 mm
WOOD MOISTURE	10% +/- 2
APPLICATION	indoor furniture indoor cladding

Material made using natural raw materials and handcrafted, the panels may not be exactly the same as each other and/or identical to the sample viewed at the time of purchase.

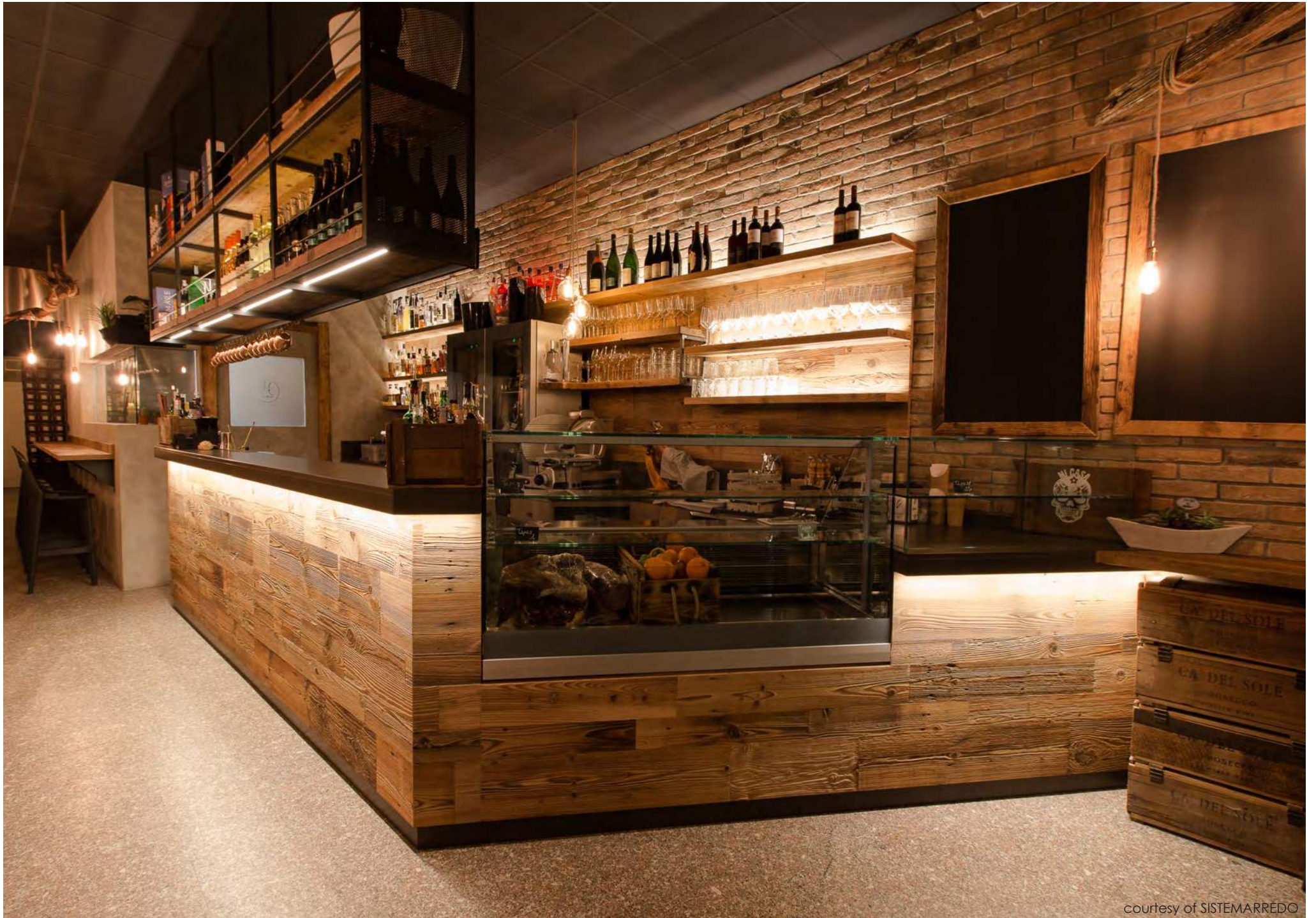






courtesy of SISTEMARREDO





courtesy of SISTEMARREDO

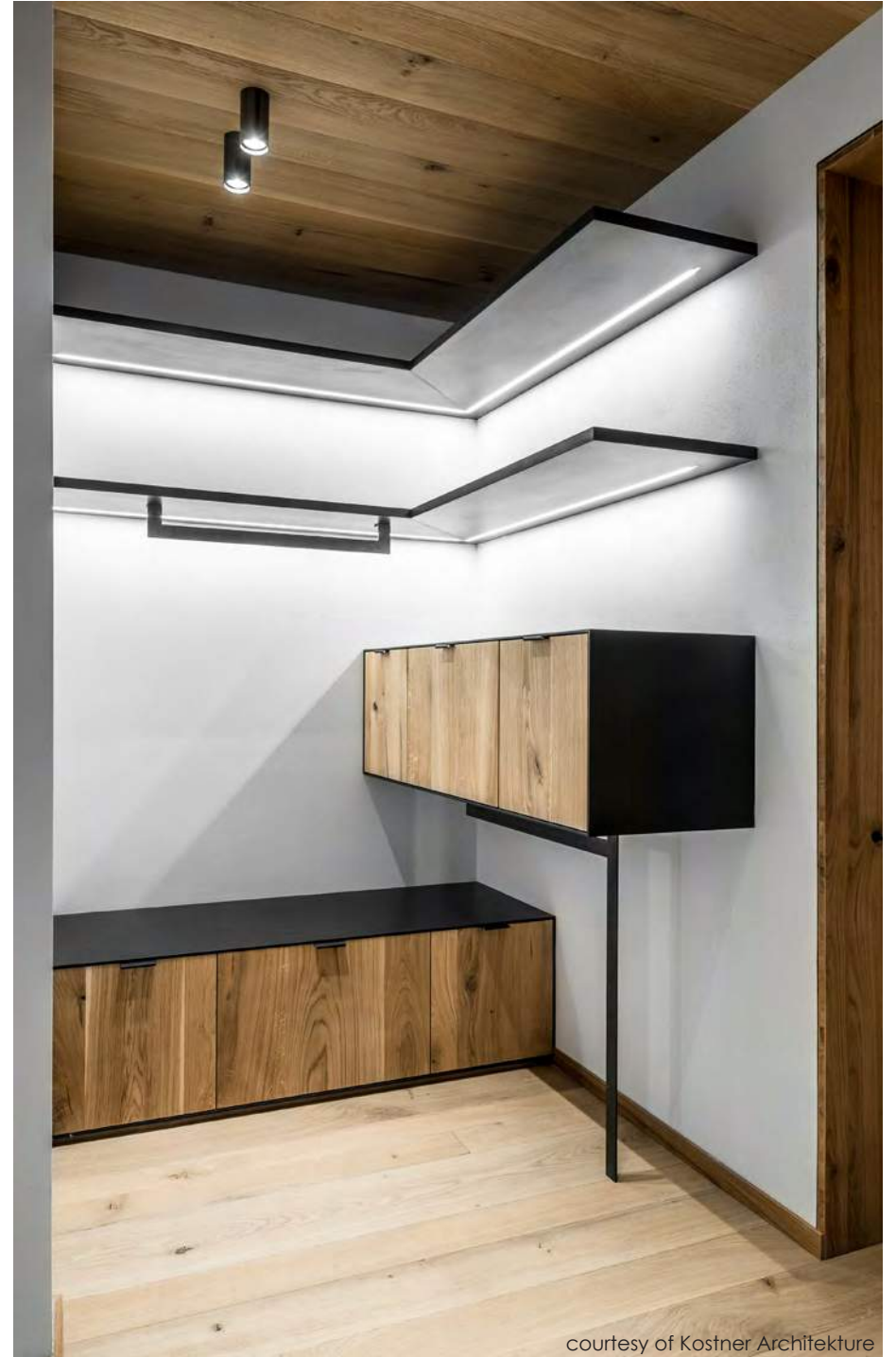




courtesy of Kostner Architektur

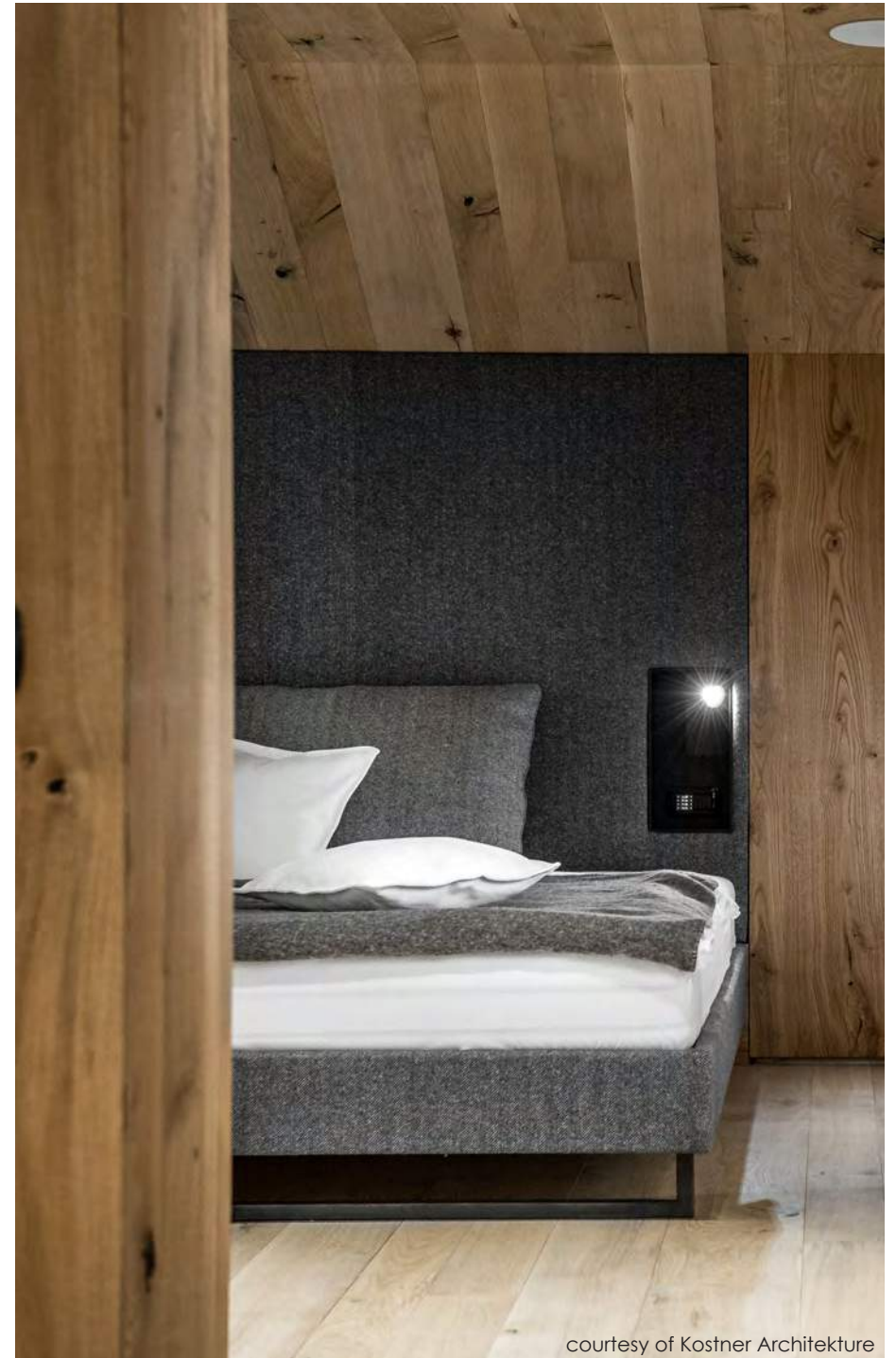


courtesy of L'AMBIENTE



courtesy of Kostner Architektur







# CUBE LINE

Material made using **natural raw materials** and **handcrafted**. Therefore, the panels may not be exactly the same as each other and/or identical to the sample viewed.

Characteristics	Advantages	Benefits
Multidimensional wood element for use as wall cladding or as a decorative element	Tongue and groove joint   Imperceptible joints	Once the panels are assembled, the perception is that of a single element   100% natural product   A combination of the beauty of natural wood and innovative design.

The Cube line represents the latest product in the Admonter® range; designed as a multidimensional wall cladding, it differs from the Admonter® range and expresses new accents and a new interpretation of natural wood that combines the material concreteness of wood with the linearity of contemporary design. A comprehensive collection featuring nine essences with enveloping nuances.







## SANDED LARCH CUBE

AVAILABLE

Finish	Rough sanded
Treatment	white oiled upon request
Interlocking	Tongue and groove
Panel format	1237x237 mm
Bonding	SWP/1 (IW 67)
Thickness panel	about 17 mm
Composition panel	Solid wood surface in 3 different thicknesses. 3-layer fir support.



## OAK CUBE

AVAILABLE

Finish	Rough sawn
Treatment	natural oiled upon request
Interlocking	Tongue and groove
Panel format	1237x237 mm
Bonding	SWP/1 (IW 67)
Thickness panel	about 17 mm
Composition panel	Solid wood surface in 3 different thicknesses. 3-layer fir support.



## OLD WOOD DRIED BY THE SUN CUBE

AVAILABLE

Finish	Rough sawn
Treatment	Untreated
Interlocking	Tongue and groove
Panel format	1645x281mm
Bonding	SWP/3 (IW 67)
Thickness panel	about 21 mm
Composition panel	Solid wood surface in 3 different thicknesses. 3-layer fir support.





## HONEY OAK CUBE

ON REQUEST

Finish	Rough sawn
Treatment	Natural oiled
Interlocking	Tongue and groove
Panel format	1237x237 mm
Bonding	SWP/1 (IW 67)
Thickness panel	about 17 mm
Composition panel	Solid wood surface in 3 different thicknesses. 3-layer fir support.



## GREY ALDER OLD WOOD CUBE

ON REQUEST

Finish	Rough sawn
Treatment	Untreated
Interlocking	Tongue and groove
Panel format	1645x281mm
Bonding	SWP/3 (IW 67)
Thickness panel	about 21 mm
Composition panel	Solid wood surface in 3 different thicknesses. 3-layer fir support.

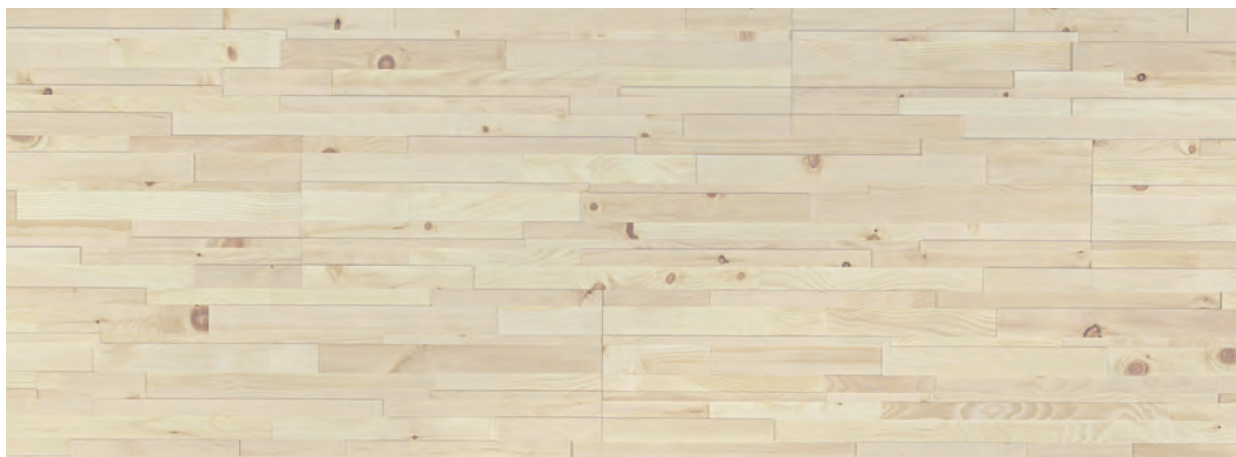


## CIRMOLO CUBE

ON REQUEST

Finish	Brushed
Treatment	Natural oiled
Interlocking	Tongue and groove
Panel format	1237 x 237mm
Bonding	SWP/3 (IW 67)
Thickness panel	about 18 mm
Composition panel	Solid wood surface in 3 different thicknesses. 3-layer fir support.





## WHITE CIRMOLO CUBE

ON REQUEST

Finish	Brushed
Treatment	Natural oiled
Interlocking	Tongue and groove
Panel format	1237x237 mm
Bonding	SWP/3 (IW 67)
Thickness panel	about 18 mm
Composition panel	Solid wood surface in 3 different thicknesses. 3-layer fir support.





ARDESIAlite™



# ARDESIALite™

Features	Advantages	Benefits
True stone veneer on fibreglass support	Light Thin Flexible Easy to machine	True stone surface Wide range of stone available Also available in large dimensions Light covering with high aesthetic impact Use of standard tooling

## FLEXIBLE STONE VENEER

Stone surfaces formed naturally through the years and subsequently veneered on flexible supports: this is ARDESIALite™, the flexible and very fine light laminate. ARDESIALite™ is a true stone veneer obtained thanks to meticulous hand-crafting that allows multiple stone layers supported by a fibreglass and polyester resin layer to be obtained from a large slab of slate. The maximum thickness of each sheet of ARDESIALite™ thus obtained is between 2-3mm and weighs less than 2kg per sq.m.

## APPLICATIONS FOR ARDESIALite™

Its flexibility, lightness, machinability and uniqueness are features that make it an exclusive and perfect material for a myriad of applications and shapes in the furniture industry, in the construction of interiors, for furnishing in general, and in design.

## SUPPORT

The supporting material must be chosen according to the requirements of the area of application. Wooden materials and light construction materials are suitable. Should ARDESIALite™ get applied to just one side of the supporting material, then a counter-balancing material to be applied to the other side should be taken into consideration.

## GLUING

All glues must be suitable for the plate's fibreglass backing. PUR glues are suitable and, furthermore, are water-resistant. Foaming glues must be applied in a very thin coat since they could seep through. For ARDESIALite™ with fibreglass support and acrylic fabric (non standard), dispersion lacquer glues can also be used or cold-applied vinyl glues or putty.

## PRESSING

ARDESIALite™ has naturally rough surfaces in thicknesses that have a tolerance of approx. 2 mm. Thickness compensators (such as, for example, polystyrene sheets or felt mats) protect the plates from damage.

## CUTTING PROCEDURE

ARDESIALite™ is composed of a thin layer of natural stone, the slate in fact, and can be cut using standard circular saws. When cutting a slate with both sides covered in ARDESIALite™, it is advisable for an incision to be made on the surface to avoid the slate's flaking. Sharp tooling, operating with too high revs or too slow feeding times, will generate friction heat, resulting in the support surface becoming plasticized.

Product made from natural, hand-crafted raw materials; therefore, panels may not be perfectly equal and/or identical to the sample viewed.

## SURFACE TREATMENT

In order to protect the surface, it would be advisable for waterproofing to be carried out with products used for protecting stone, or for the surface to be lacquered with wood lacquer.

## STYLES AND FORMATS

ARDESIALite™ is currently available in 14 different styles. All styles are available in dimensions of 1220x610 mm. Some stones are available in the larger 2440x1220 mm format.

## MAINTENANCE

After their final laying, washing with neutral detergents is advisable (such as, for example, liquid Marseilles soap or specific detergents for natural stone, readily available on the market). For cleaning, do not use aggressive or acid-based detergents, since these products can irreparably damage the material. For correct maintenance, re-apply the water and oil repellent impregnating product every 6 months to a year depending on its wear.

## WARNINGS

It is advisable for the material to be kept away from heat sources. After installation, as in the case of the great majority of materials used in constructions, the material will react to thermal expansions, without breakages, cracking or swelling. Being natural stone, slate is characterised by colour shadings as well as different and irregular streaks that make each slab unique and inimitable. These characteristics do not constitute grounds for claims or complaints.





# ARDESIALite™ SOFT

Product made from natural, hand-crafted raw materials; therefore, panels may not be perfectly equal and/or identical to the sample viewed.

ARDESIALite™ SOFT is a real stone veneer on a cotton fabric support impregnated in polyester resin. This is an easily worked, light, thin and flexible material, which can be perfectly adapted to curved surfaces.

## FEATURES

- Surface in real stone.
- Wide range of stones available.
- Light coverings with considerable aesthetic impact.
- Use of standard tooling.

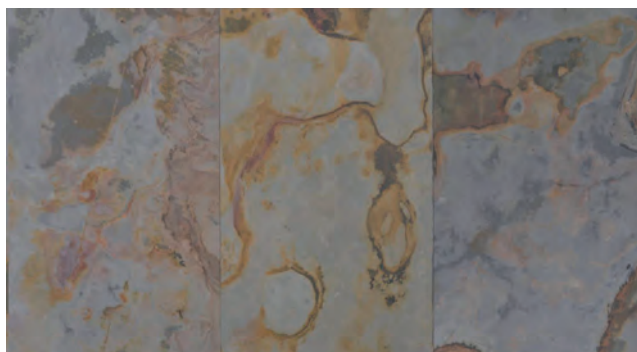




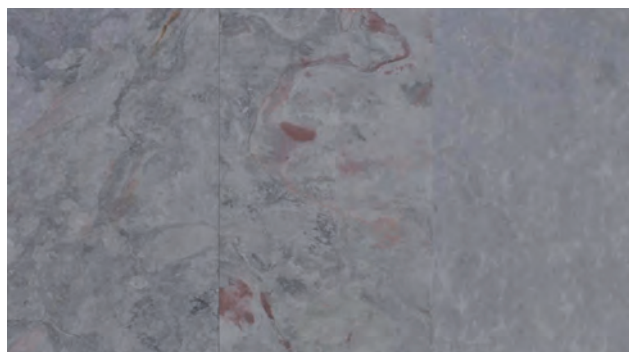
	ARDESIAlite <b>Soft</b> thickness 1-2 mm	ARDESIAlite thickness 2-3 mm
<b>AUTUMN LEAF</b>		
1220x610 mm	■	■
2440x1220 mm		□
<b>SNOW WHITE</b>		
1220x610 mm	■	■
<b>CREAM AUTUMN</b>		
1220x610 mm	■	■
<b>RUSTIC</b>		
1220x610 mm	■	■
<b>SILVER SHINE</b>		
1220x610 mm	■	■
2440x1220 mm		■

	ARDESIAlite <b>Soft</b> thickness 1-2 mm	ARDESIAlite thickness 2-3 mm
<b>GOLDEN GREEN</b>		
1220x610 mm	□	■
2440x1220 mm	□	■
<b>DARK OCEAN</b>		
1220x610 mm	■	■
<b>LIME BLACK</b>		
1220x610 mm	■	■
<b>RED MARS</b>		
1220x610 mm	■	■
<b>COPPER</b>		
1220x610 mm	■	■

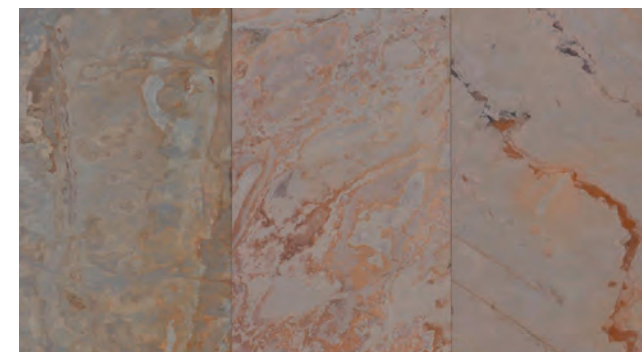
	ARDESIAlite <b>Soft</b> thickness 1-2 mm	ARDESIAlite thickness 2-3 mm
<b>RED COPPER</b>		
1220x610 mm	■	■
<b>PEACOCK</b>		
1220x610 mm	■	■
<b>MULTICOLOR</b>		
1220x610 mm	■	■
2440x1220 mm		■
<b>OCEAN BLACK</b>		
1220x610 mm	■	■
2440x1220 mm		■



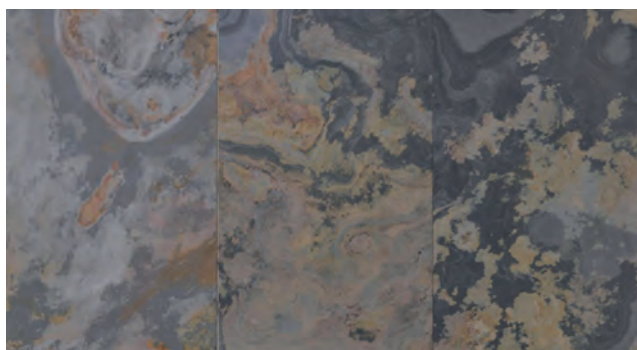
AUTUMN LEAF



SNOW WHITE



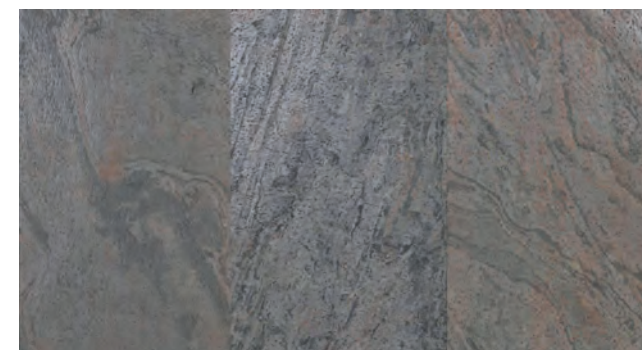
CREAM AUTUMN



RUSTIC

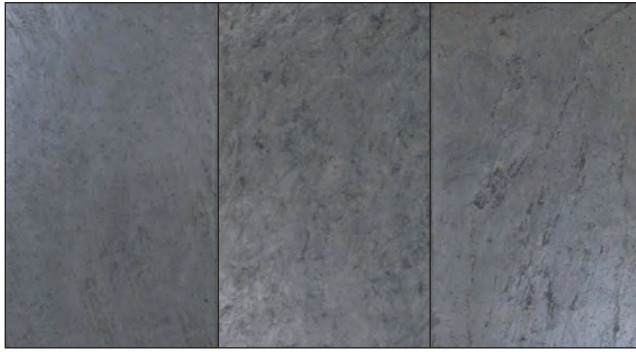


SILVER SHINE

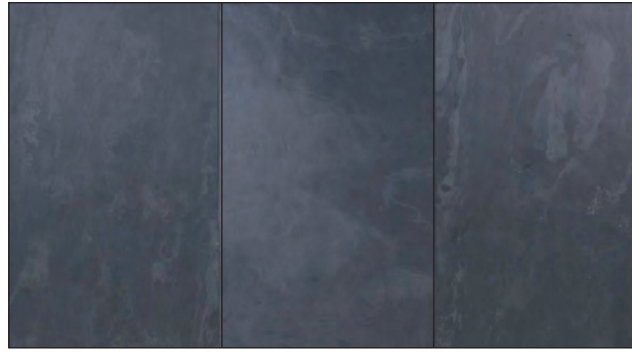


GOLDEN GREEN

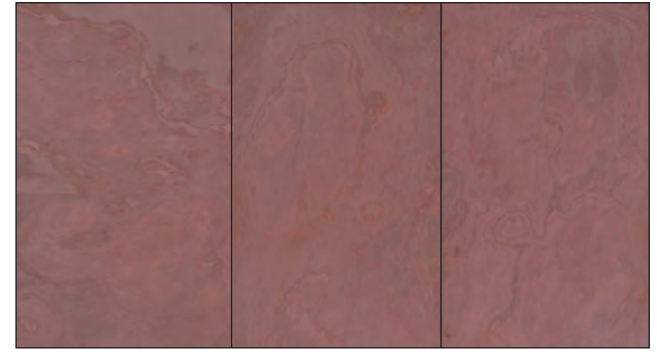




DARK OCEAN



LIME BLACK



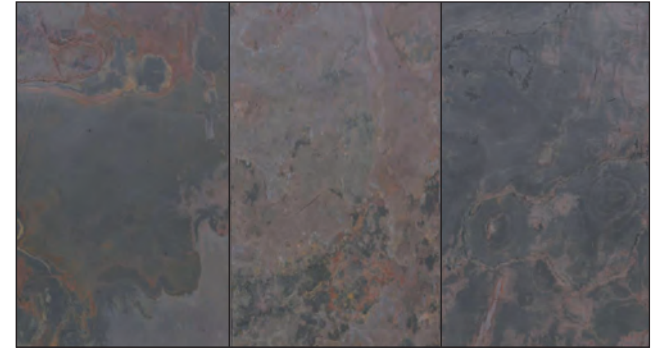
RED MARS



COPPER



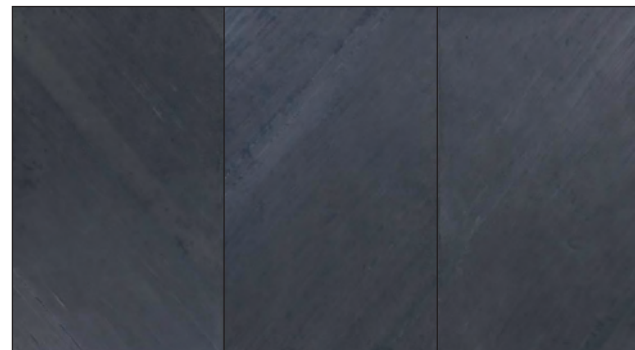
RED COPPER



PEACOCK



MULTICOLOUR



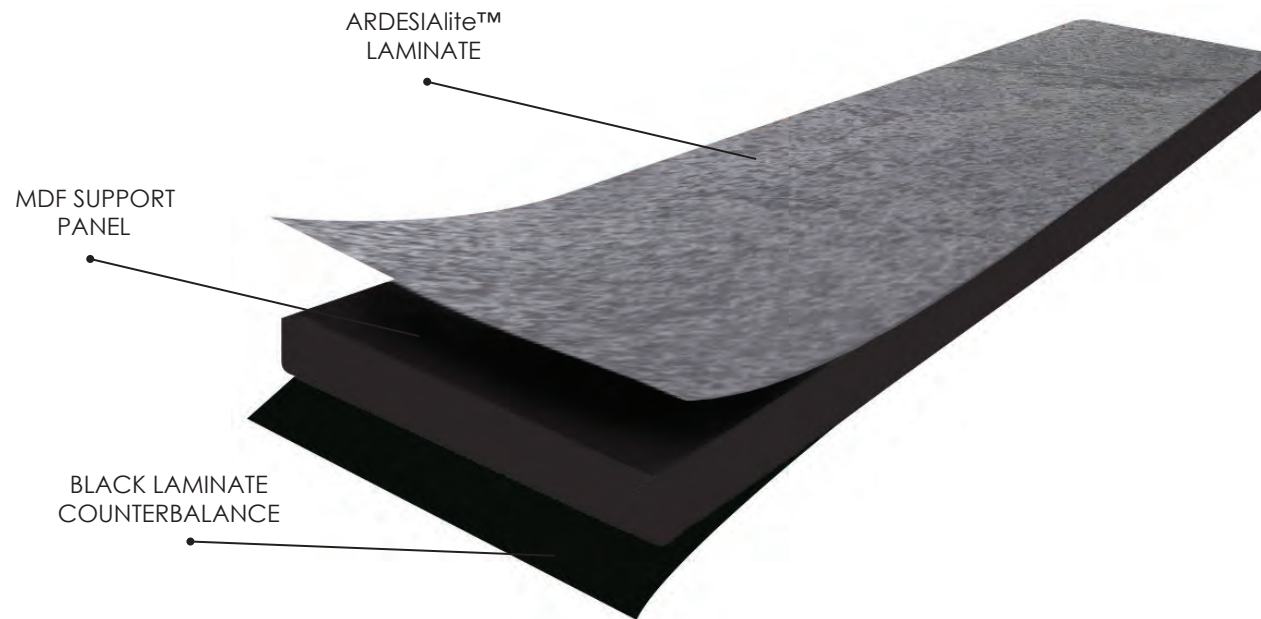
OCEAN BLACK



# ARDESIAlite™ PLATED PANEL new

ARDESIAlite™ plated panel (5 types) on std MDF, MDF Black and Multilayer Poplar counterbalanced laminate support.

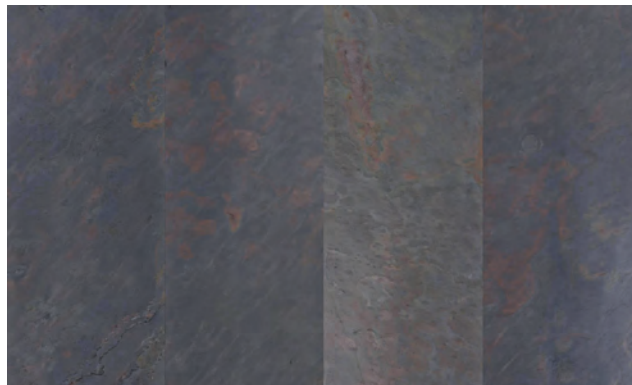
THICKNESS mm	DIMENSIONS mm
Total thickness	
■ 19 mm	2440x1220
□ 21 mm	2440x1220



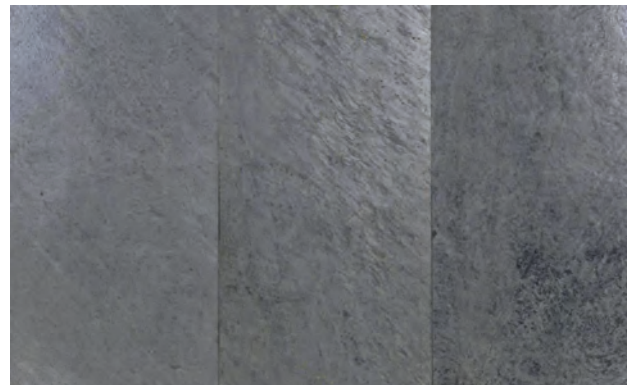
■ SILVER SHINE



■ OCEAN BLACK



□ MULTICOLOUR



□ DARK OCEAN



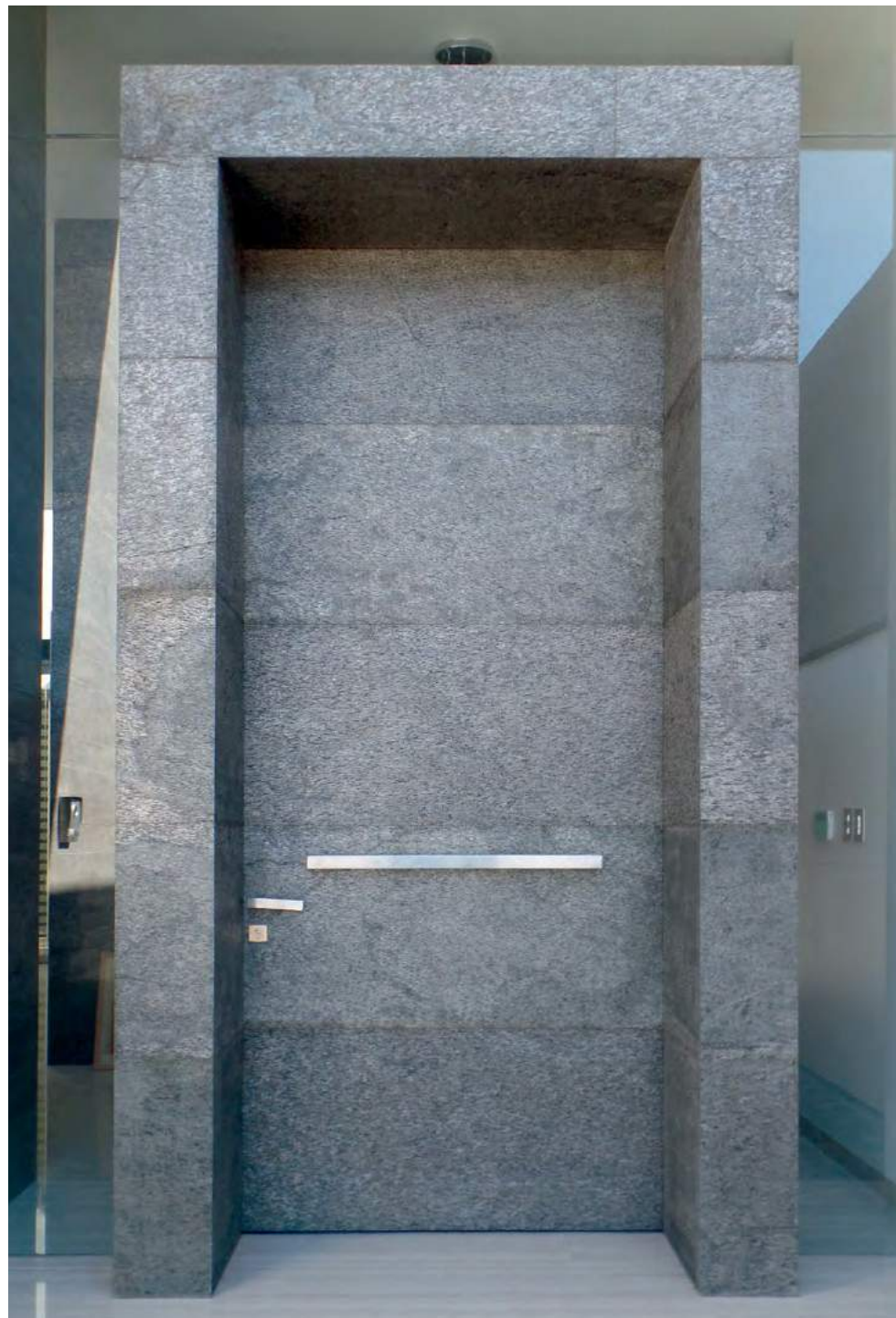
□ SNOW WHITE

■ in stock □ upon request













ACRYLIC



Composed of two subgroups that can be distinguished by the name of the product.

- CODING S (S20 + S21) glossy and opaque surfaces with **anti-scratch treatment** available in different single colours and in metallic/pearly colours. The panel size is 2800x1300 mm, available in 3 different thicknesses, that is 7.7mm/17.7mm/23.7 mm - MDF support
- "COLOUR + CODE" CODING (e.g. WHITE 001) glossy acrylic surfaces. Without **scratch-resistant** treatment/basic IVORY, WHITE, BLACK, TAUPE colours. The 3750x1290x18.4 format panel (or 18.8 on the two glossy sides) - standard chipboard support. The diversity can be seen from the thickness (0.7 the former and 1.4 the latter), but above all from the quality of the raw material that is clearly superior with the "S" coding. The only "flaw" is that it cannot be folded (e.g. folding processing) because the surface would crack. The surface is protected by a protective film which can be removed once installed on a finished piece of furniture. The balancing back (if it is not two sides) is only available in white or black.

S20 001

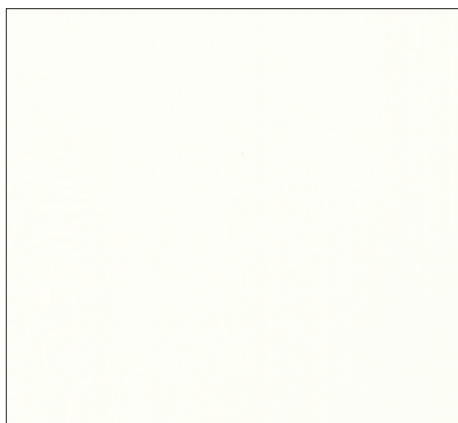
Polished



**MDF**  
Dimensions:  
2800x1300 mm  
Thicknesses:  
7,7 / 17,7 / 23,7 mm

S20 002

Polished



**MDF**  
Dimensions:  
2800x1300 mm  
Thicknesses:  
7,7 / 17,7 / 23,7 mm

S20 003

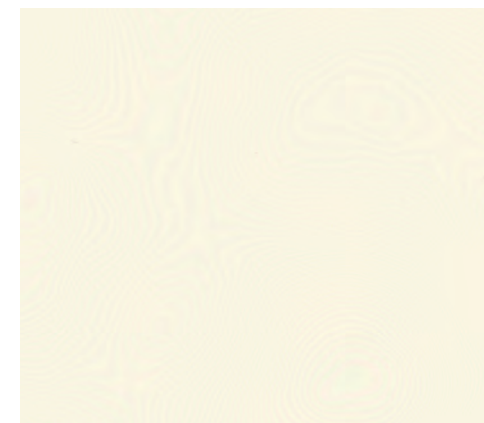
Polished



**MDF**  
Dimensions:  
2800x1300 mm  
Thicknesses:  
7,7 / 17,7 ■ / 23,7 mm

S20 004

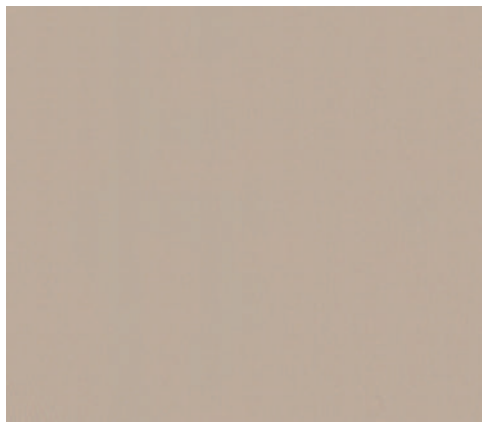
Polished



**MDF**  
Dimensions:  
2800x1300 mm  
Thicknesses:  
7,7 / 17,7 ■ / 23,7 mm



**S20 005** Polished



**MDF**  
Dimensions:  
2800x1300 mm  
Thicknesses:  
7,7 / 17,7 / 23,7 mm

**S20 006** Polished



**MDF**  
Dimensions:  
2800x1300 mm  
Thicknesses:  
7,7 / 17,7 / 23,7 mm

**S20 007** Polished



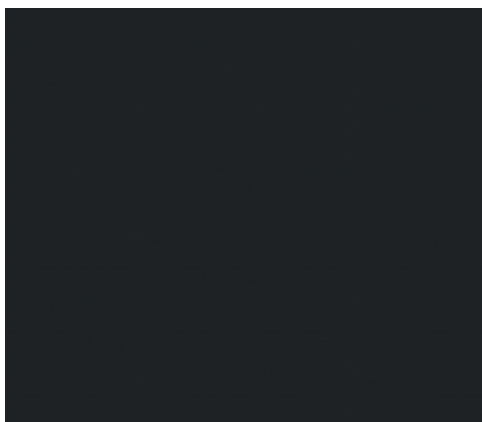
**MDF**  
Dimensions:  
2800x1300 mm  
Thicknesses:  
7,7 / 17,7 / 23,7 mm

**S20 008** Polished



**MDF**  
Dimensions:  
2800x1300 mm  
Thicknesses:  
7,7 / 17,7 ■ / 23,7 mm

**S20 009** Polished



**MDF**  
Dimensions:  
2800x1300 mm  
Thicknesses:  
7,7 / 17,7 / 23,7 mm

**S20 010** Polished



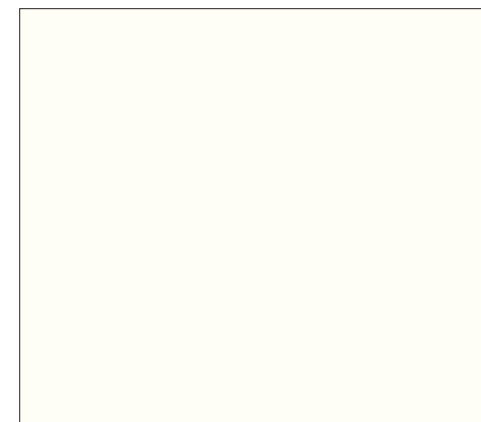
**MDF**  
Dimensions:  
2800x1300 mm  
Thicknesses:  
7,7 / 17,7 / 23,7 mm

**S20 011** Polished



**MDF**  
Dimensions:  
2800x1300 mm  
Thicknesses:  
7,7 / 17,7 / 23,7 mm

**S20 016** Polished



**MDF**  
Dimensions:  
2800x1300 mm  
Thicknesses:  
7,7 / 17,7 / 23,7 mm

■ in stock \_\_\_ □ upon request



**S20 017**

Polished



**MDF**

Dimensions:  
2800x1300 mm  
Thicknesses:  
7,7 / 17,7 / 23,7 mm

**S20 018**

Polished

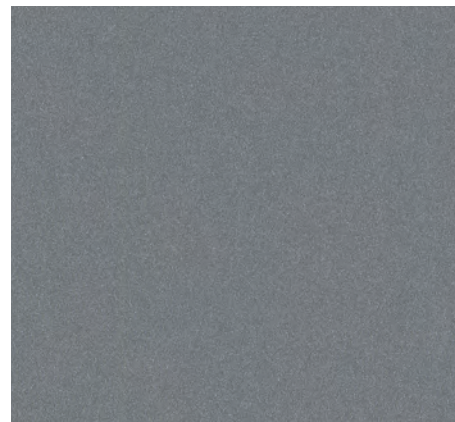


**MDF**

Dimensions:  
2800x1300 mm  
Thicknesses:  
7,7 / 17,7 / 23,7 mm

**S20 019**

Polished



**MDF**

Dimensions:  
2800x1300 mm  
Thicknesses:  
7,7 / 17,7 ■ / 23,7 mm

**S20 020**

Polished



**MDF**

Dimensions:  
2800x1300 mm  
Thicknesses:  
7,7 / 17,7 / 23,7 mm

**S20 021**

Polished



**MDF**

Dimensions:  
2800x1300 mm  
Thicknesses:  
7,7 / 17,7 ■ / 23,7 mm

**S20 022**

Polished



**MDF**

Dimensions:  
2800x1300 mm  
Thicknesses:  
7,7 / 17,7 / 23,7 mm

**S20 023**

Polished



**MDF**

Dimensions:  
2800x1300 mm  
Thicknesses:  
7,7 / 17,7 / 23,7 mm

**S20 024**

Polished

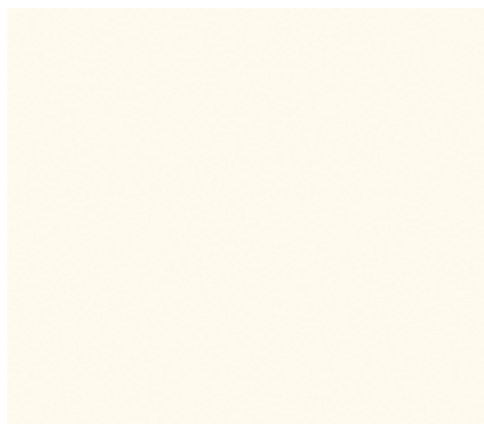


**MDF**

Dimensions:  
2800x1300 mm  
Thicknesses:  
7,7 / 17,7 / 23,7 mm

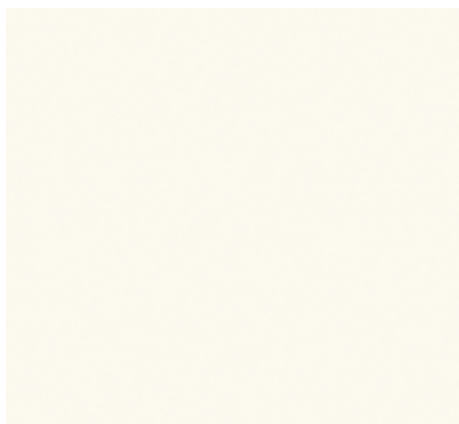


**S21 001** Matt



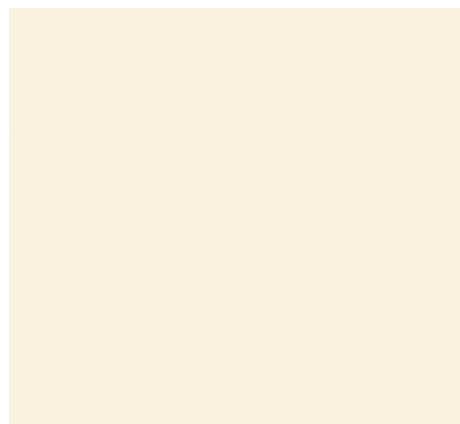
**MDF**  
Dimensions:  
2800x1300 mm  
Thicknesses:  
7,7 / 17,7 / 23,7 mm

**S21 002** Matt



**MDF**  
Dimensions:  
2800x1300 mm  
Thicknesses:  
7,7 / 17,7 ■ / 23,7 mm

**S21 003** Matt



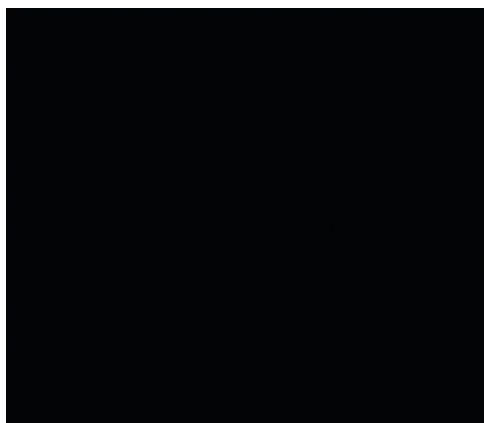
**MDF**  
Dimensions:  
2800x1300 mm  
Thicknesses:  
7,7 / 17,7 / 23,7 mm

**S21 004** Matt



**MDF**  
Dimensions:  
2800x1300 mm  
Thicknesses:  
7,7 / 17,7 / 23,7 mm

**S21 005** Matt



**MDF**  
Dimensions:  
2800x1300 mm  
Thicknesses:  
7,7 / 17,7 / 23,7 mm

**S21 006** Matt



**MDF**  
Dimensions:  
2800x1300 mm  
Thicknesses:  
7,7 / 17,7 / 23,7 mm

**S21 007** Matt



**MDF**  
Dimensions:  
2800x1300 mm  
Thicknesses:  
7,7 / 17,7 / 23,7 mm

**S21 008** Matt

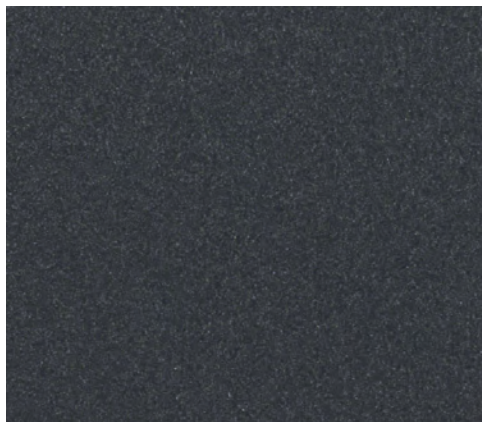


**MDF**  
Dimensions:  
2800x1300 mm  
Thicknesses:  
7,7 / 17,7 / 23,7 mm



**S21 009**

Matt



**MDF**

Dimensions:  
2800x1300 mm  
Thicknesses:  
7,7 / 17,7 / 23,7 mm

**S20 014**

Polished

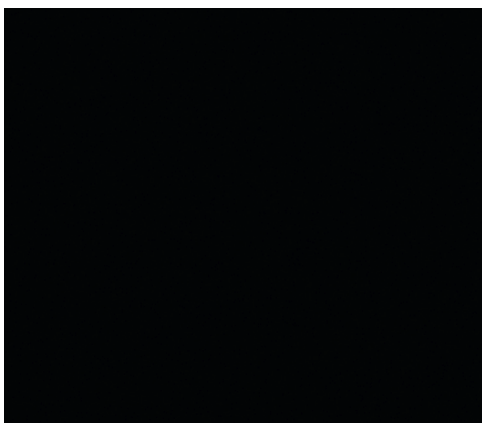


**MDF**

Dimensions:  
2800x1300 mm  
Thicknesses:  
7,7 / 17,7 / 23,7 mm

**BLACK 012**

Polished

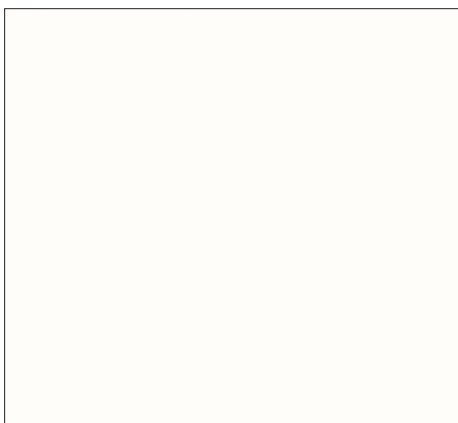


**CHIPBOARD**

Dimensions:  
3750x1290 mm  
Thicknesses:  
18,4 ■ / 18,8 mm

**WHITE 001**

Polished



**CHIPBOARD**

Dimensions:  
3750x1290 mm  
Thicknesses:  
18,4 ■ / 18,8 mm

**IVORY 002**

Polished



**CHIPBOARD**

Dimensions:  
3750x1290 mm  
Thicknesses:  
18,4 / 18,8 mm

**TAUPE 050**

Polished



**CHIPBOARD**

Dimensions:  
3750x1290 mm  
Thicknesses:  
18,4 / 18,8 mm



A collection composed of 8 glossy colours + 8 matt colours. GLASS-TEC is certainly lighter, has a scratch-resistant surface, is perfect for an application even in environments where special safety measures are required, for example kindergartens, since it is unbreakable, but above all, the panels can be made without using particular tools; those commonly used in carpentry are sufficient. The size of the panels is 2800x1300x20, composed as follows: GLASS-TEC SHEET 2 mm - MDF 16 mm - POLYSTYRENE SHEET 2 mm (IN COLOUR) The surface is protected by a protective film that can be removed once installed on a finished piece of furniture.

<b>G22 001</b> <b>G23 001</b>	Polished glass Matt glass	<b>G22 002</b> <b>G23 002</b>	■ Polished glass ■ Matt glass	<b>G22 003</b> <b>G23 003</b>	Polished glass Matt glass	<b>G22 004</b> <b>G23 004</b>	Polished glass Matt glass
							
<b>MDF</b> Dimensions: 2800x1300 mm Thicknesses: 20 mm		<b>MDF</b> Dimensions: 2800x1300 mm Thicknesses: 20 mm		<b>MDF</b> Dimensions: 2800x1300 mm Thicknesses: 20 mm		<b>MDF</b> Dimensions: 2800x1300 mm Thicknesses: 20 mm	
<b>G22 005</b> <b>G23 005</b>	Polished glass Matt glass	<b>G22 006</b> <b>G23 006</b>	Polished glass Matt glass	<b>G22 007</b> <b>G23 007</b>	■ Polished glass ■ Matt glass	<b>G22 008</b> <b>G23 008</b>	Polished glass Matt glass
							
<b>MDF</b> Dimensions: 2800x1300 mm Thicknesses: 20 mm		<b>MDF</b> Dimensions: 2800x1300 mm Thicknesses: 20 mm		<b>MDF</b> Dimensions: 2800x1300 mm Thicknesses: 20 mm		<b>MDF</b> Dimensions: 2800x1300 mm Thicknesses: 20 mm	

■ in stock \_\_ □ upon request



The **TEOCTURE** panel will have a standard 3050x1300x18,4 format, composed as follows: **TEOCTURE** 1.4 mm SHEET – 16 mm CHIPBOARD – 1 mm WHITE POLYSTYRENE SHEET

Ensure that the thickness of the sheet and therefore the panel is nominal because it varies according to the depth of the decorative panelling. Acrylic/polyurethane/water-based paint can be used on its surfaces. There are really many fields of application: home furnishings (including rooms such as the kitchen, living area, bedroom), wall panelling, shop-hotel-restaurant-room furniture, door manufacturers, decorative panelling in general, can be used outdoors if supported correctly or in damp environments.

## NOVA

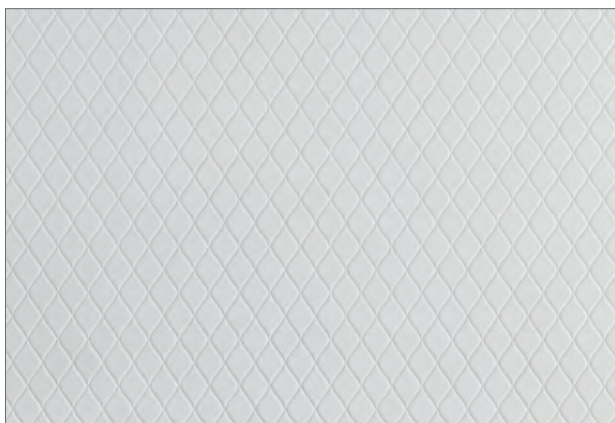
Matt white



Dimensions:  
3050x1300 mm Sheet 1,4 mm / Particleboard 18,4 mm  
2750x1220 mm MDF 18,4 mm

## LOOP

Matt white

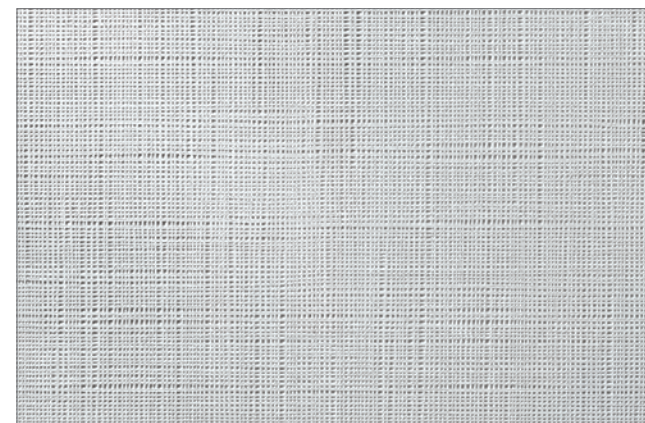


Dimensions:  
3050x1300 mm Sheet 1,4 mm ■ / Particleboard 18,4 mm  
2750x1220 mm MDF 18,4 mm



## CACTUS

Matt white



Dimensions:  
3050x1300 mm Sheet 1,4 mm ■ / Particleboard 18,4 mm  
2750x1220 mm MDF 18,4 mm ■



**PIASTRELLATO**

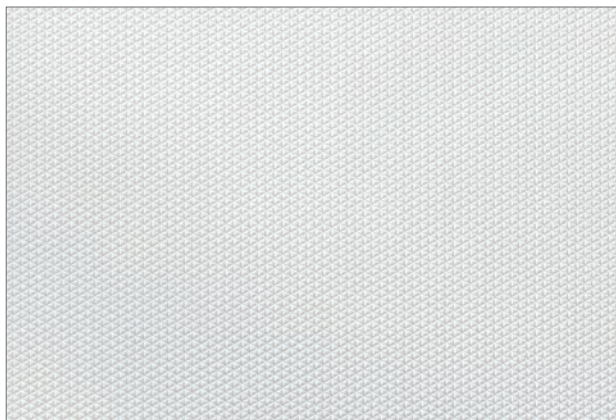
Matt white



Dimensions:  
 3050x1300 mm Sheet 1,4 mm / Particleboard 18,4 mm  
 2750x1220 mm MDF 18,4 mm

**DIAMANTINO**

Matt white



Dimensions:  
 3050x1300 mm Sheet 1,4 mm ■ / Particleboard 18,4 mm  
 2750x1220 mm MDF 18,4 mm ■

**ITALIAN PLANK**

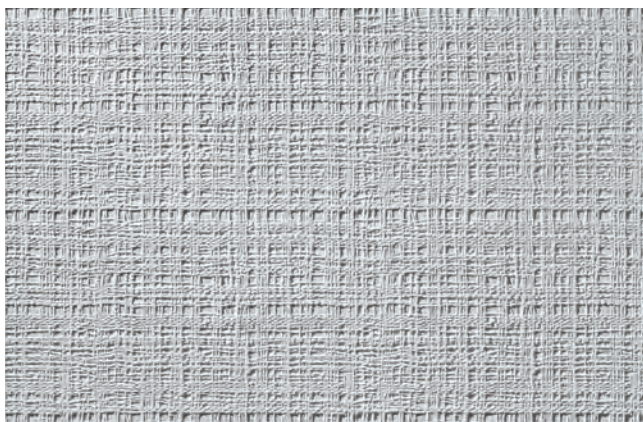
Matt white



Dimensions:  
 3050x1300 mm Sheet 1,4 mm ■ / Particleboard 18,4 mm  
 2750x1220 mm MDF 18,4 mm ■

**SACCO**

Matt white



Dimensions:  
 3050x1300 mm Sheet 1,4 mm / Particleboard 18,4 mm  
 2750x1220 mm MDF 18,4 mm

**ATELIER VENETO**

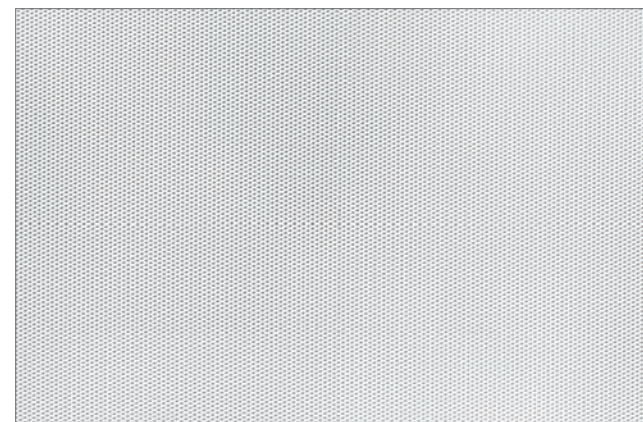
Matt white



Dimensions:  
 3050x1300 mm Sheet 1,4 mm / Particleboard 18,4 mm  
 2750x1220 mm MDF 18,4 mm

**BEE HIVE**

Matt white



Dimensions:  
 3050x1300 mm Sheet 1,4 mm / Particleboard 18,4 mm  
 2750x1220 mm MDF 18,4 mm



**CHARRO**

Matt white



Dimensions:  
3050x1300 mm Sheet 1,4 mm / Particleboard 18,4 mm  
2750x1220 mm MDF 18,4 mm

**FIORATO**

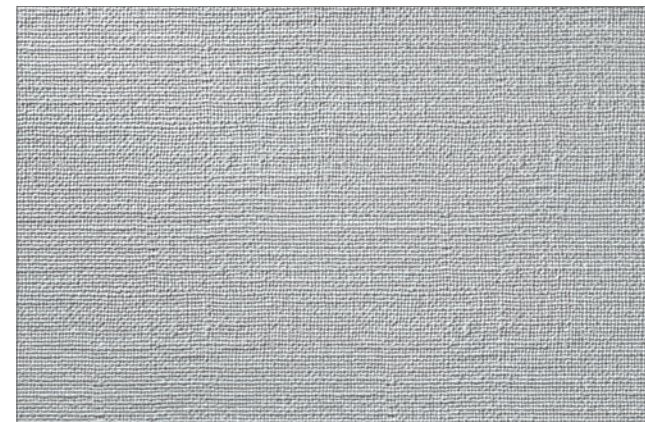
White



Dimensions:  
3050x1300 mm Sheet 1,4 mm / Particleboard 18,4 mm  
2750x1220 mm MDF 18,4 mm

**JUTA**

White



Dimensions:  
3050x1300 mm Sheet 1,4 mm ■ / Particleboard 18,4 mm  
2750x1220 mm MDF 18,4 mm ■

**GIGLIO**

White/Grey/Mud/Silver



Dimensions:  
3050x1300 mm Sheet 1,4 mm ■ / Particleboard 18,4 mm  
2750x1220 mm MDF 18,4 mm ■

**PIUMA**

Matt white



Dimensions:  
3050x1300 mm Sheet 1,4 mm / Particleboard 18,4 mm  
2750x1220 mm MDF 18,4 mm

**MURO**

Matt white



Dimensions:  
3050x1300 mm Sheet 1,4 mm / Particleboard 18,4 mm  
2750x1220 mm MDF 18,4 mm



**VUITON**

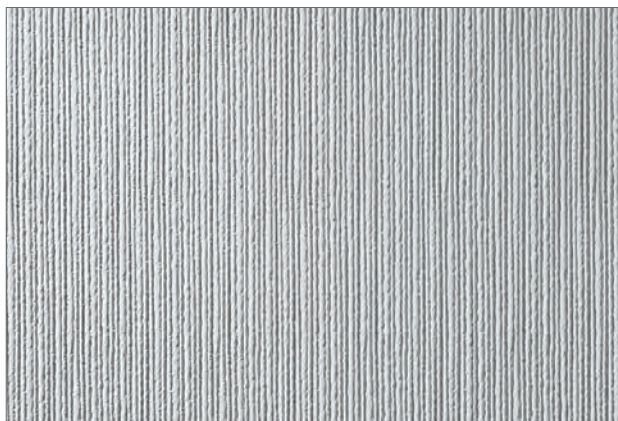
Matt white



Dimensions:  
3050x1300 mm Sheet 1,4 mm / Particleboard 18,4 mm  
2750x1220 mm MDF 18,4 mm

**EFFETTO TESSUTO**

Matt white



Dimensions:  
3050x1300 mm Sheet 1,4 mm / Particleboard 18,4 mm  
2750x1220 mm MDF 18,4 mm

**NILO**

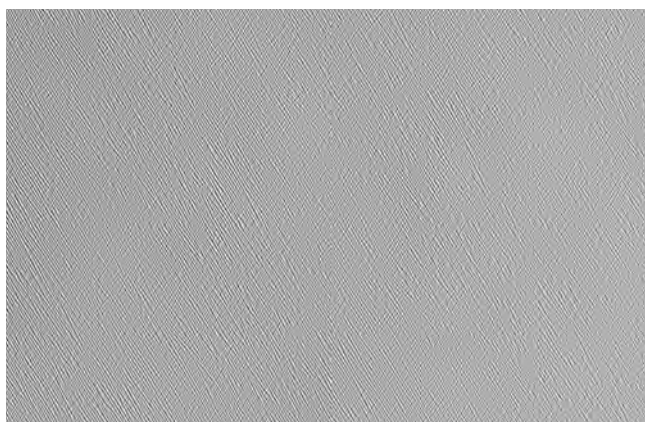
Matt white



Dimensions:  
3050x1300 mm Sheet 1,4 mm / Particleboard 18,4 mm  
2750x1220 mm MDF 18,4 mm

**GRAFFIATO**

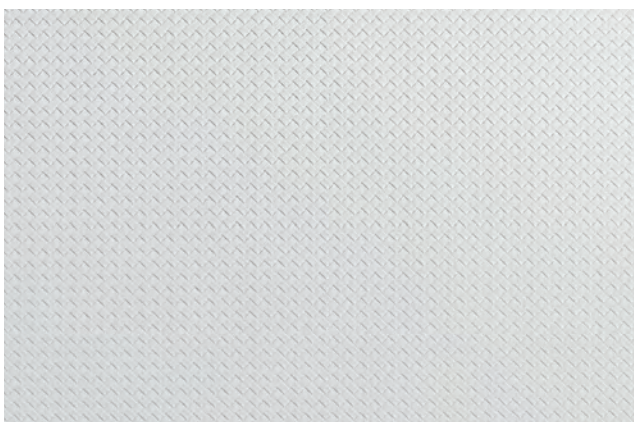
Matt white



Dimensions:  
3050x1300 mm Sheet 1,4 mm / Particleboard 18,4 mm  
2750x1220 mm MDF 18,4 mm

**INTRECCIATO**

Matt white



Dimensions:  
3050x1300 mm Sheet 1,4 mm / Particleboard 18,4 mm  
2750x1220 mm MDF 18,4 mm



LP SURFACE



# LP SURFACE

LP SURFACE is the result of a need to increase the aesthetic appeal of veneered panels, respecting the expense budget of all those concerns seeking materials destined for mass production.

The LP SURFACE collection is an exclusive line of MDF panels finished with special lacquering on one or both sides, particularly suited to vertical applications such as shutters and coverings, available in four standard styles.  
For quantities greater than 50 sq.m, a customised finish can be requested.

Features	Advantages	
Panel consisting of marble powder combined with thermosetting resins, pigments and metallic powder.	Light	Easy machining
	Practical	Multiple applications
	Versatile	

	<b>CEMENTO LIGHT GREY</b> 2800x1220 mm	10 16 19 25	<input type="checkbox"/> <input type="checkbox"/> <input checked="" type="checkbox"/> <input type="checkbox"/>
	<b>CEMENTO DARK GREY</b> 2800x1220 mm		<input type="checkbox"/> <input type="checkbox"/> <input checked="" type="checkbox"/> <input type="checkbox"/>
	<b>ACCIAIO</b> 2800x1220 mm		<input type="checkbox"/> <input type="checkbox"/> <input checked="" type="checkbox"/> <input type="checkbox"/>
	<b>RUGGINE</b> 2800x1220 mm		<input type="checkbox"/> <input type="checkbox"/> <input checked="" type="checkbox"/> <input type="checkbox"/>



LP SURFACE  
CEMENTO LIGHT GREY



LP SURFACE  
CEMENTO DARK GREY




LP SURFACE  
ACCIAIO



LP SURFACE  
RUGGINE



An abstract black sculpture is set against a bright, white background. The sculpture consists of a thick, curved ring that encircles a vertical rod. The ring is positioned in the foreground, while the rod extends from the top of the frame down through the center. The lighting creates strong highlights and shadows, emphasizing the three-dimensional form and the smooth, solid surface of the material.

SOLID SURFACE



# STARKRYL®

Features	Advantages	
Manufactured in about two thirds aluminium hydroxide and a third PMMA	Non-toxic	Colour uniformity over the whole thickness
Composite Material	Hygienic	
Non-absorbent	Ecological	Customisable shapes
Non porous	Always recoverable	Possibility for surface inlaying
Thermo-formable material	Imperceptible Joints	
	Machinable with joinery tooling	Possibility for curved surfaces

## THE PRODUCT

STARKRYL® is a material characterised by high aesthetic and functional performances. Composed of PMMA, aluminium hydroxide and trihydroxide, and colour pigments, STARKRYL® is produced in slabs of different formats from which, thanks to the thermo-forming process, original and interesting prints with aesthetic appeal can be created, lending themselves to use in bathrooms, kitchens and to ideas for interior design. It is available in 9 elegant colour versions.

## WORKABILITY

STARKRYL® can be cut, milled, drilled and sanded simply with normal joinery work tools. It can be bonded to wooden supports with polyurethane glues or silicone. It can be curved by membrane press or by means of die and counter-die after the slabs have been suitably heated. Application of edges is done using acrylic glues, as also the mounting of basins and junctions.

**STARKRYL® can always be restored** since it is homogeneous throughout its thickness. Light incisions and scratches can be smoothed with sand paper. In case of particularly serious damage, STARKRYL® can be repaired by a plug of the same material being inserted, glued and then sanded flush, until a perfect, imperceptible join is obtained.

**IMPORTANT!** To avoid a film forming on the product's surface, never use wax based products.



## APPLICATION

**STARKRYL®** is a most versatile material. Its most traditional uses are in the kitchen for sinks and worktops or in bathrooms for wash basins and bathtubs. However, there are multiple scenarios in which slabs of this material can be deployed: counter coverings in restaurants, bars, hotels and shops, wall coverings with personalised finishes, furniture, shelving, bookcases, chairs and tables, signboards.





**STARKRYL® Translucent White •**

6/12  
760/930\*  
3660



**STARKRYL® Cameo •**

6/12  
760/930\*  
3660



**STARKRYL® Vanilla**

6/12  
760/930\*  
3660



**STARKRYL® Butter**

6/12  
760/930\*  
3660



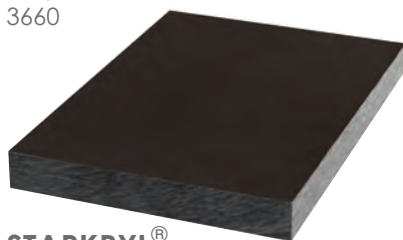
**STARKRYL® Bone**

6/12  
760/930\*  
3660



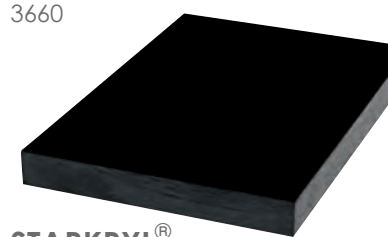
**STARKRYL® Grey**

6/12  
760/930\*  
3660



**STARKRYL® Coffee\***

6/12  
760/930\*  
3660



**STARKRYL® Black\***

6/12  
760/930\*  
3660

thicknesses mm  
width mm  
length mm  
off the shelf\_ \*on request



**STARKRYL® White •**

6 mm  
Thicknesses



9 mm  
Thicknesses



12 mm  
Thicknesses



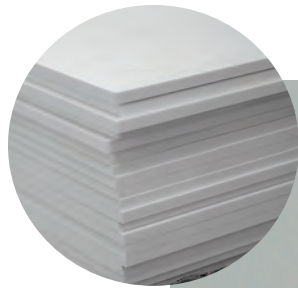
dimensions mm			
	6	9	12
	3660x1350	3660x1350*	3660x1350
	3660x1220	3660x1220	3660x1220
	3660x930	3660x930	3660x930
	3660x760	3660x760	3660x760

\*on request



# PERSONALISATION AREA

POSSIBILITY FOR BATHROOM COMPLEMENTS TO BE MOULDED ON REQUEST.



FROM THE SKETCH  
TO THE FINISHED PRODUCT.

Should you have a project involving STARKRYL®,  
**LEGNOPAN®** will assist you throughout the process stages:

- 1 Delivery of the technical drawing
- 2 Product consulting depending on client requirements
- 3 Quotation
- 4 Work performance
- 5 Material delivery













The background of the image is a close-up, vertical view of dark-stained wooden planks. The wood grain is prominent, showing various patterns of knots and lines. The planks are arranged side-by-side, creating a rhythmic vertical pattern. The lighting is slightly uneven, with some areas appearing darker than others, emphasizing the texture of the wood.

INDOOR FLOORING



# WOOD FLOORING

MADE IN ITALY  
**new**

Features	Advantages	Benefits
Real oak wood flooring. Walkable 4 mm-thick layer	Available in thicknesses from 11 mm for renovations	Versatile   EC certified products   Class A+ products



## THREE-LAYER OAK

### Dimensions

(thickness x table width x length)

15 x 180 x 1800 - 2100 mm  
15 x 189 x 1800 - 1900 mm  
15 x 190 x 1800 - 2100 mm  
15 x 220 x 2200 mm

### Interlocking type

M+F

### Finishes

sanded, brushed, varnished, oiled, bleached, pickled, dyed with sample colour

### Quality

Premium, Natural

note: other essences upon request (walnut, beech, larch, etc.)

## TECHNICAL CHARACTERISTICS

Acrylic **varnishing** with UV curing;  
6 coats applied by roller for a total of about 150 g/m<sup>2</sup>.

Natural drying **oiling**.

## Assembly of the layers of the plank

Water-resistant adhesives are used, with no formaldehyde content.  
Class D3 according to UNI EN 204/205.

## Thermal conductivity

- for thickness of 11 mm 0,13 - 0,15 W/mK
- for thickness of 14 mm 0,20 - 0,24 W/mK (EN 12524:2000)
- for thickness of 15 mm 0,20 - 0,24 W/mK (EN 12524:2000)

## Fire reaction

Dfl - s1 (Cfl-s1 upon request)  
UNI EN 13501-1:2007

**Type of installation with adhesive on screed.**



# WOOD FLOORING **new**

## ANTIQUE

## PA15ROEUAN



<b>Essence</b>	European Oak	<b>Structure</b>	3 Layers
<b>Choice</b>	Rustic	<b>Treatment</b>	Brushed
<b>Dimensions</b>	15 x 180 x 1800 - 2100 mm (thickness x panel width x length) 15 x 190 x 1800 - 2100 mm (thickness x panel width x length)		

## ETNA

## PA015ROEUET



<b>Essence</b>	Oak	<b>Structure</b>	3 Layers
<b>Choice</b>	Natural	<b>Treatment</b>	Brushed Thermo
<b>Dimensions</b>	15 x 189 x 1800 - 1900 mm (thickness x panel width x length) 15 x 190 x 1800 - 1900 mm (thickness x panel width x length)		

## NAXOS

## PA15ROEUNX



<b>Essence</b>	European Oak FSC	<b>Structure</b>	3 Layers
<b>Choice</b>	Rustic	<b>Treatment</b>	Planed, Plastered Black Thermo
<b>Dimensions</b>	15 x 190 x 1800 - 1900 mm (thickness x panel width x length)		

## SANTORINI

## PA15ROEUST



<b>Essence</b>	European Oak FSC	<b>Structure</b>	3 Layers
<b>Choice</b>	Rustic	<b>Treatment</b>	Brushed, Grouted Black Thermo
<b>Dimensions</b>	15 x 190 x 1800 - 1900 mm (thickness x panel width x length)		



# WOOD FLOORING **new**

UV OIL 220 CARPE DIEM

PA15ROEUUV



Essence	European Oak	Structure	3 Layers
Choice	Only	Treatment	Brushed
Dimensions	15 x 220 x 2200 mm (thickness x panel width x length)		

UV OIL NATURAL

PA015RONAUV



Essence	Oak	Structure	3 Layers
Choice	Natural	Treatment	Brushed
Dimensions	15 x 189 x 1800 - 1900 mm (thickness x panel width x length) 15 x 190 x 1800 - 1900 mm (thickness x panel width x length)		

UV OIL PRIMA SPAZZ

PA15ROPRUV



Essence	Oak	Structure	3 Layers
Choice	First	Treatment	Brushed
Dimensions	15 x 189 x 1800 - 1900 mm (thickness x panel width x length) 15 x 190 x 1800 - 1900 mm (thickness x panel width x length)		



# COLLEZIONE 190

**new**

two layers  
glued-down  
micro-bevelled

noble slat  
2.5 mm  
thickness

## DESCRIPTION

Two-layer prefinished single plank of European Oak flooring according to UNI EN 13489 - UNI EN 13756.

## FINISH

Material treated with transparent UV OIL varnish with matt effect. All finishes, except Natural, receive a transparent colouring that enhances the fibre of the wood.

## PROCESSING

The parquet is processed using light brushing to enhance its three-dimensionality and create a surface that is irregular to the touch. All finishes are grouted black and micro-bevelled on all four sides.

## INSTALLATION

The installation must be carried out by qualified personnel. **Two layers** only for **installations with gluing-down** to the substrate. The three-layer product is also suitable for **floating installation**.

## WHITE



Choice	Rustic	Treatment	Light brushing
Dimensions	10 x 190 x 1800 - 1900 mm (thickness x panel width x length)		

## SOFT TOUCH



Choice	Rustic	Treatment	Light brushing
Dimensions	10 x 190 x 1800 - 1900 mm (thickness x panel width x length)		

## NATURAL



Choice	Rustic	Treatment	Light brushing
Dimensions	10 x 190 x 1800 - 1900 mm (thickness x panel width x length)		

## TORTORA



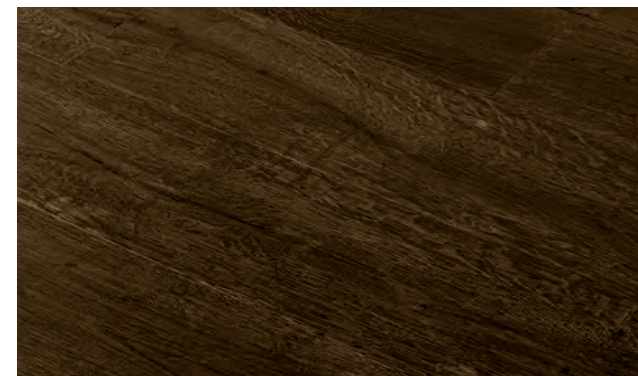
Choice	Rustic	Treatment	Light brushing
Dimensions	10 x 190 x 1800 - 1900 mm (thickness x panel width x length)		

## ANTIQUE



Choice	Rustic	Treatment	Light brushing
Dimensions	10 x 190 x 1800 - 1900 mm (thickness x panel width x length)		

## COFFEE



Choice	Rustic	Treatment	Light brushing
Dimensions	10 x 190 x 1800 - 1900 mm (thickness x panel width x length)		



# F4U: FLOOR FOR YOU <sup>new</sup>

F4U is the only **silent LVT flooring**, a digital 3D surface with a natural matt finish is pleasant to the touch and gives it a contemporary look.

**EASY and FAST**, F4U flooring allows rapid **installation thanks to its patented 5G joint system** which reduces installation time.

In 1220x180x5 mm and 610x305x5 mm formats, in 100% RECYCLABLE virgin PVC, it is inspired by natural materials, the decor with 3D depth makes it incredibly similar to wood and stoneware.

The ideal flooring for renovations thanks to its **REDUCED THICKNESS**, it is suitable for any setting, including private and public areas, distribution in hotels, restaurants and cafeterias (Ho.Re.Ca.).

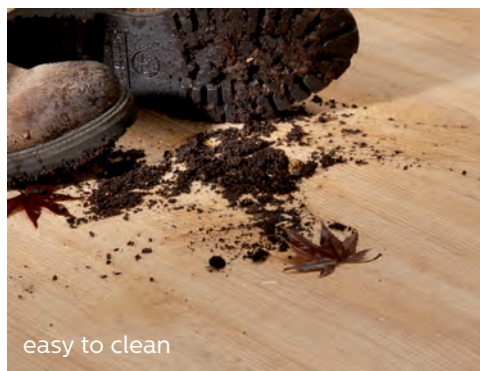
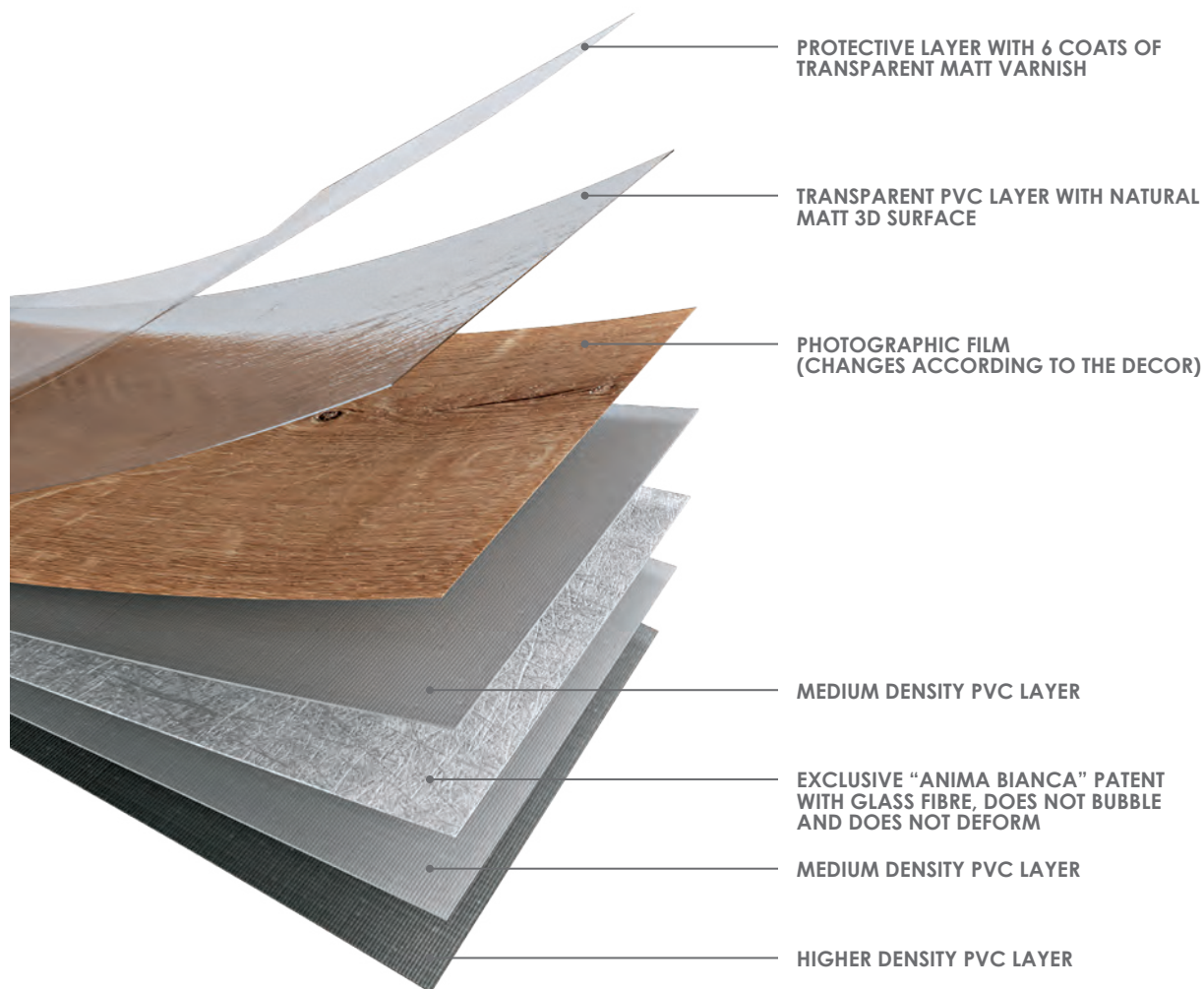
Thanks to its technical content, F4U guarantees excellent durability over time against wear and dirt.

Thanks to the exclusive "Anima Bianca" patent, F4U does not bubble and does not deform.

CLASS 23  
Class of use for intense residential use.

CLASS 33  
Class of use for intense commercial use.

CLASS 42  
Class of use for medium industrial use.





# F4U: FLOOR FOR YOU <sup>new</sup>

All products feature the exclusive patented joint system 

## SATURNO

0050



Decor	Wood	3D effect	YES
Dimensions	5 x 180 x 1220 mm (thickness x panel width x length)		



## PLUTONE

0045



Decor	Wood	3D effect	NO
Dimensions	5 x 180 x 1220 mm (thickness x panel width x length)		



## TERRA

0000



Decor	Wood	3D effect	YES
Dimensions	5 x 180 x 1220 mm (thickness x panel width x length)		



## TITANO

0040



Decor	Wood	3D effect	NO
Dimensions	5 x 180 x 1220 mm (thickness x panel width x length)		





# F4U: FLOOR FOR YOU <sup>new</sup>

All products feature the exclusive patented joint system



**TRITONE**

**0025**



Decor	Wood	3D effect	NO
Dimensions	5 x 180 x 1220 mm (thickness x panel width x length)		



**MERCURIO**

**0005**



Decor	Wood	3D effect	YES
Dimensions	5 x 180 x 1220 mm (thickness x panel width x length)		



**GIOVE**

**0020**



Decor	Wood	3D effect	YES
Dimensions	5 x 180 x 1220 mm (thickness x panel width x length)		



**NETTUNO**

**0030**



Decor	Wood	3D effect	YES
Dimensions	5 x 180 x 1220 mm (thickness x panel width x length)		





## VENERE

0055

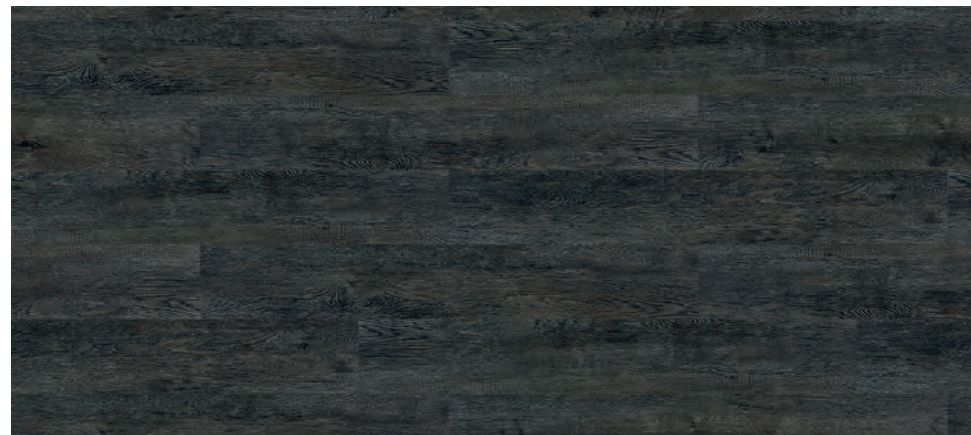


Decor	Wood	3D effect	NO
Dimensions	5 x 180 x 1220 mm (thickness x panel width x length)		



## URANO

0035

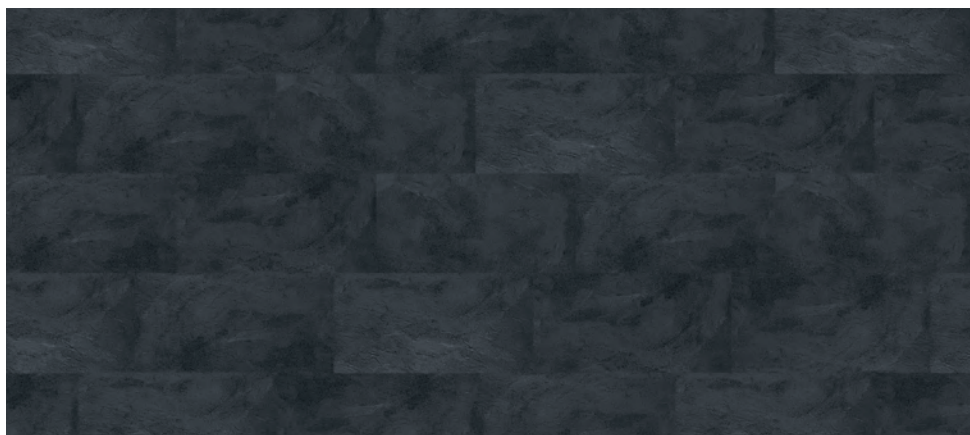


Decor	Wood	3D effect	YES
Dimensions	5 x 180 x 1220 mm (thickness x panel width x length)		



## MARTE

0015



Decor	Grès anthracite	3D effect	NO
Dimensions	5 x 305 x 610 mm (thickness x panel width x length)		



## LUNA

0010



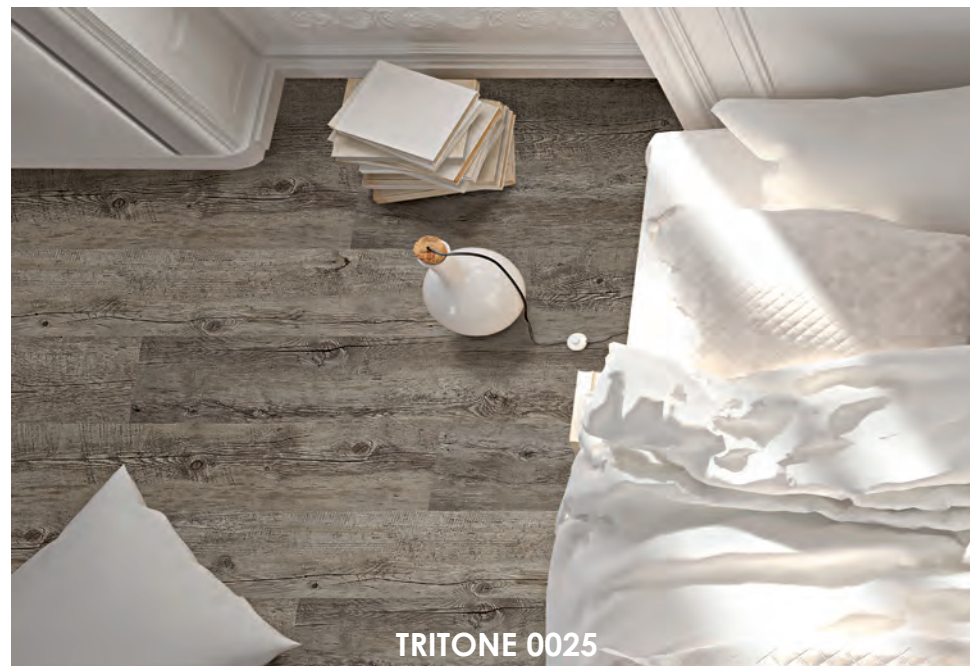
Decor	Grés grey	3D effect	NO
Dimensions	5 x 305 x 610 mm (thickness x panel width x length)		





# F4U - APPLICATIONS

All products feature the exclusive patented joint system







# OUTDOOR FLOORS



# MOON-WOOD <sup>new</sup>

Thanks to its unique structure, **TWPC Thermo Decking** is one of the most stable composite materials on the market. What makes TWPC so durable is the high-quality heat-treated wood fibre used in structure: the product contains twice as much of the fibre as a piece of solid wood of the same size.

**TWPC Thermo Decking** is three times the Density of pine and contains more than 65% of heat-treated wood fibre and about 20% of CIRCO® high-quality recycled polypropylene plastic. The high quantity of heat-treated fibre in the product and its low degree of expansion will maintain the shape and size stable over time.

**TWPC** is the durable choice for outdoor flooring such as stairs, swimming pools, terraces and piers.



MOCCA BROWN



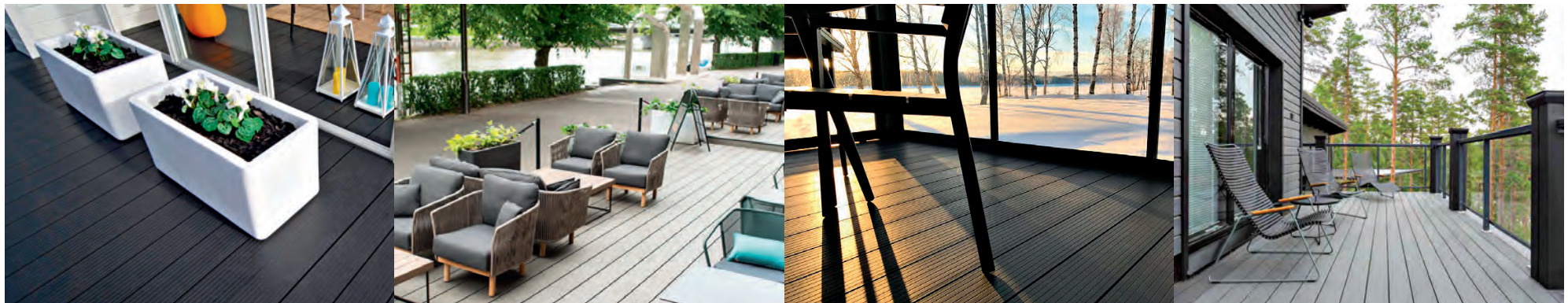
GRAPHITE GREY



SILVER GREY



BLACK





# MOON-WOOD <sup>new</sup>

The effect of exposure of TWPC Thermo Decking to UV rays.

Given the nature of the heat-treated wood fibre, the Silver decking, in particular, has a BEIGE hue just laid, but the colour tends to grey once exposed to sunlight like natural wood.

Colours may vary slightly from those shown in the images: on the left, the product is represented as it is when new, on the right, the same product after 6 weeks under the sun.

The initial colour of the TWPC fades slightly during the first 6-12 weeks (Indicative) of exposure to UV light. The final colour may vary depending on the amount of UV rays to which the product is exposed.

## NATURAL CHROMATIC CHANGE

example of color after exposure to UV rays, 6 weeks after installation

### BLACK



### MOCCA BROWN



### GRAPHITE GREY



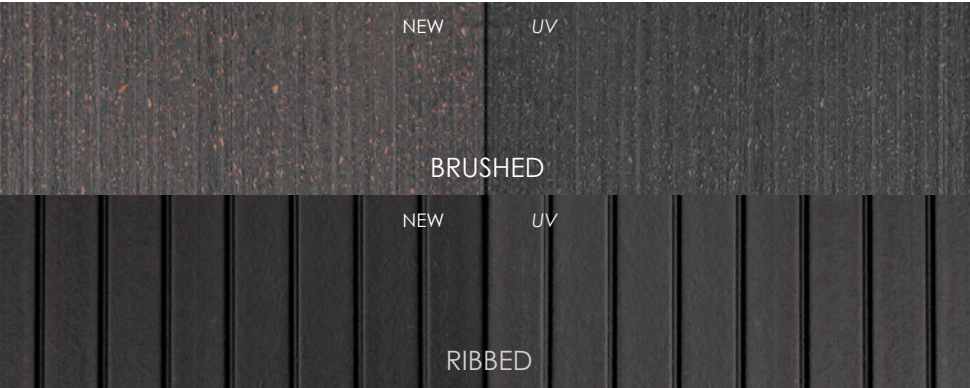
### SILVER GREY





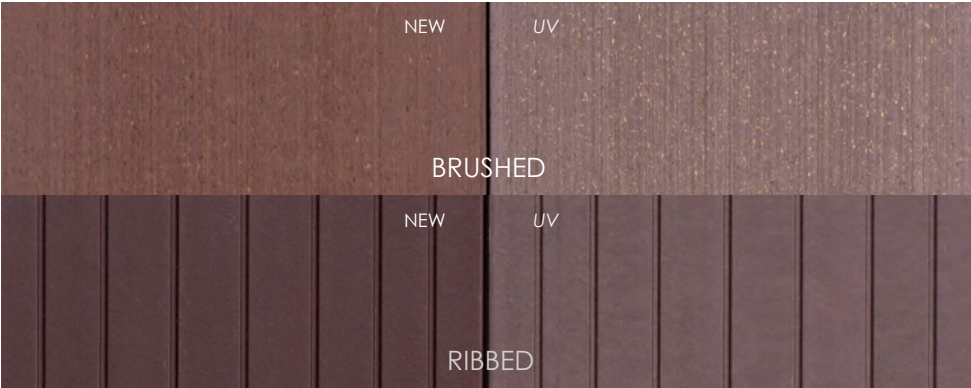
# MOON-WOOD new

## BLACK



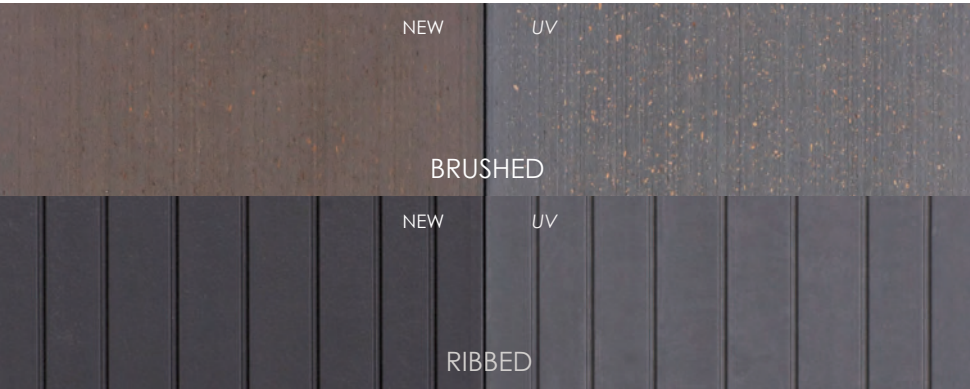
DECKING	DECKING CARRABILE
26 x 140 mm x 2400 mm (thickness x width x length)	42 x 200 mm x 2400 mm (thickness x width x length)

## MOCCA BROWN



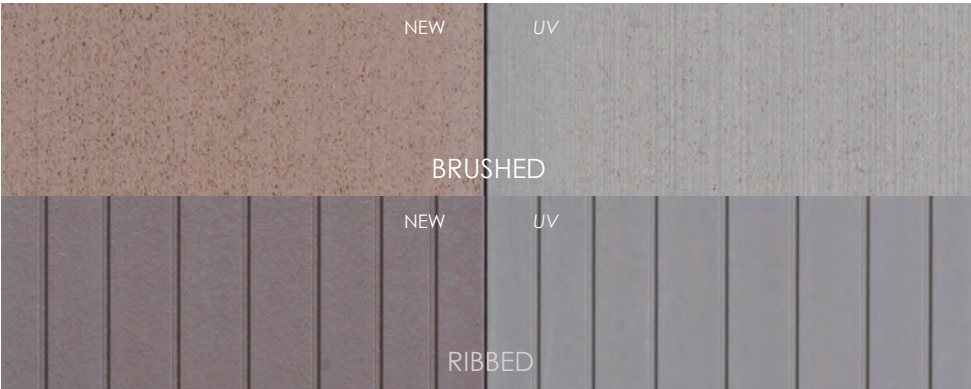
DECKING	DECKING CARRABILE
26 x 140 mm x 2400 mm (thickness x width x length)	42 x 200 mm x 2400 mm (thickness x width x length)

## GRAPHITE GREY



DECKING	DECKING CARRABILE
26 x 140 mm x 2400 mm (thickness x width x length)	42 x 200 mm x 2400 mm (thickness x width x length)

## SILVER GREY



DECKING	DECKING CARRABILE
26 x 140 mm x 2400 mm (thickness x width x length)	42 x 200 mm x 2400 mm (thickness x width x length)



**Legnopan S.p.A.**

via dell'Industria, 13/15 | 36013 Piovene Rochette (VI) - Italia | tel. +39 0445 551500 | fax +39 0445 551515 | [info@legnopan.com](mailto:info@legnopan.com)

[www.legnopan.com](http://www.legnopan.com)