

Product description: imi composite floor board (PUR with impact sound insulation)

- The imi floor board element thickness is 17,5 mm.
- Coreboard is a water resistant 15 mm PUR-board (different thicknesses on request).
- Backside: laminated underlay „Sound Protect Eco Acoustic System“.
- Surface – authentic structured concrete design.
- Processed easily with conventional tools for carpenters.

Application possibilities:

imi-beton floor panels are suitable for domestic and general commercial use. Small damages of the surface can be easily fixed with a special post processing.

Designs:

Concrete smooth grey



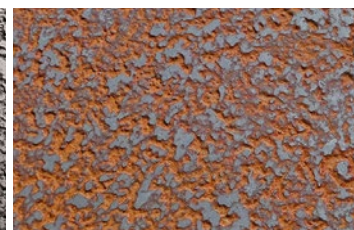
Concrete vintage



Asphalt



Precious rust



Technical details:

Dimensions: standard board size up to 2.400 x 1.200 mm. Other formats on request, maximum 3.400 x 1.300 mm. Thickness 17,5 mm, weight approx. 14,5 kg/m²

	Test Method Standard	Marking acc. Standard
Edge swelling	EN 13329, annex G	Corebord especially water-resistant; < 1,0 %
Abrasion resistance	DIN EN ISO 5470-1	37 mg
Impact resistance	acc. to EN 13329, annex F	IC 2; reparable by post processing
Reaction to fire	DIN 4102 T1 / EN 13501-1	B1 / B _{fl} s1
Slip resistance (oil)	DIN 51130: 2004 - 06	R 10
Impact sound reduction	DIN EN ISO 140-8	~ 23 dB
Room sound	IHD standard 431 „test with proband“	great reduction of 48 %; loudness class S L50
Resistance to staining	acc. to EN 438-2: internal selection	Good
Resistance to cigarette burns	EN 438-2	Exception: jod, hair tint, tar
Colour fastness to light	EN ISO 105 - B02 : light fastness EN 20105 - A02 : reference test	Slight change of the surface ≥ grade 2 Blue wool scale: ≥ 6 Grey scale : ≥ 4
Static indentation	acc. to DIN EN 433	≤ 0,1 mm
Thermal conductance	DIN EN 12664 – thermal resistance	> 0,150 (m2K) / W - heat insulating
Formaldehyde emission	Heat transmission	surface feel: „warm“ The coreboard is produced without active addition of formaldehyde

(Values are valid only for imi-beton smooth grey.)

Packaging	Lying on pallet.
Storage	Store dry, interlayers with foam foil. Protect from frost.
Recycling	Product is ecologically harmless, can be recycled and disposed of in the household waste.
Sealing	We recommend that after installation, the imi-beton floor has to be varnished with our imi-pure transparent sealing (Art. 5500) , or comparable floor sealings.

Further informations you can find in the laying instruction: www.imi-beton.com/downloads

Information is provided according to our best knowledge. The contents are, however, not legally binding. The user is not released from verifying that the materials are suitable for the intended purpose. Technical changes reserved.

The main component of the mineral imi coating is organic so that colour shadings between different lots can not be excluded completely. Samples of these materials only show the general appearance and cannot unite the characteristics like colour, texture and structure. Differences of any kind, as well as air inclusions, are natural and no reason for claim. Low distortion as well as little displacements in the joint area and minor gap formation cannot be fully excluded.