

### Product description: imi-flex composite plate

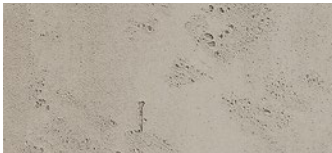
- The imi-flex composite board is available in many designs.
- The carrier board is a 0.9 mm HPL-board. The rear is HPL - raw.
- The top is coated with a flexible, mineral imi-coating at a thickness of 1 - 7 mm. This is plastic-bound and can easily be processed with conventional carbide-equipped carpentry tools.
- The mineral imi-beton coating is classified according to EN 15824:2009 as non-flammable A2-s1, d0.
- The surfaces are painted with a matte varnish.
- For a higher strain, e.g. on horizontal areas, we recommend an additional matte protective coat of varnish.
- For highly stressed areas, such as worktops, counter and table areas, the product imi-plus is recommended.
- The surfaces can be painted and are available in nearly any colour.
- Imprints such as scripts or logos and symbols are possible as well.

### Usage options:

E.g. furniture, inner doors, furniture fronts, shop and trade fair constructions, interior design, e.g. wall panellings, shape bonds, etc.

### Designs:

Smooth formwork grey



Smooth formwork anthr.



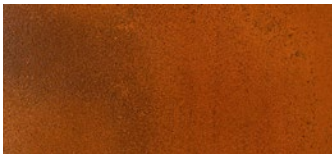
Timber formwork



Asphalt



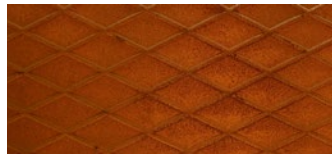
Rust smooth



Rust deep



Rust diamond



Precious rust



### Technical Data:

Dimensions: 3,030 x 1,280 mm

Surface	imi-beton Smooth formwork grey and anthracite, timber formwork,	imi-rost smooth and deep	imi-rost diamond, Precious rust, Asphalt
Coating thickness	approx. 1-2 mm	approx. 1-3 mm	approx. 1-3 mm
suitable for inner radii as of	approx. 50 mm	approx. 50 mm	approx. 100 mm
suitable for outer radii as of	approx. 150 mm	approx. 150 mm	approx. 150 mm
Weight	approx. 3 kg	approx. 3 kg	approx. 3 kg

### Processing:

#### Sawing/drilling/milling

With regular carbide-equipped tools. Diamond-equipped tools are not necessary.

#### Screws

Pre-drilling is recommended.

#### Cleaning/care

The imi-compound surface must be treated like a normally veneered, painted surface. Cleaning is possible with a mist-moistened rag.

#### Bond

- Commercial glues
- Cold pressing
- Pressure 200 kg/m<sup>2</sup>
- For the time of pressing, observe the processing notes of the glue manufacturer or the glue.
- Additions depending on foam film structure / corrugated cardboard, insulating boards or similar.

#### Counter-pull

We recommend a 0.8 - 1 mm thick HPL as counter-pull. Unilateral mineral coating means that slight distortions cannot be excluded.

#### Packaging

Lying on pallet.

#### Storage

Store dry, interim layers with foam foil or corrugated cardboard. Protect from frost.

#### Recycling

Product is ecologically harmless, can be recycled and disposed of in the household waste.

Information is provided according to our best knowledge. The contents are, however, not legally binding. The user is not released from verifying that the materials are suitable for the intended purpose. Technical changes reserved.

The main component of the mineral imi coating is organic so that colour shadings between different lots can not be excluded completely. Samples of these minerals only show the general appearance and cannot unite the characteristics like colour, texture and structure. Differences of any kind, as well as air inclusions, are natural and no reason for claim. Low distortion as well as little displacements in the joint area and minor gap formation cannot be fully excluded.